

CRUISE & TOUR

ANTARCTICA | ARGENTINA | BORNEO | BRAZIL | BRUNEI | CHINA | HONG KONG
JAPAN | MADAGASCAR | MALDIVES | MAURITIUS | REUNION | SEYCHELLES | SINGAPORE
SOUTH AFRICA | SOUTH KOREA | TAIWAN | THAILAND | VIETNAM

2026 – 2027



OUR AWARD-WINNING COLLECTION OF ESCORTED TOURS AND TAILORMADE HOLIDAYS

The winner of 'Best Specialist Tour Operator' 15 years running – Globe Travel Awards

The most prestigious accolade in the travel industry

WHY CRUISE & TOUR?



Our Cruise & Tour Holidays combine two extraordinary experiences – an ocean cruise with some of the world’s best cruise operators, and one of our award-winning itineraries – creating an unforgettable holiday.

Our fully inclusive touring ethos, where everything is taken care of, is the perfect match for a carefree cruise adventure. With our carefully chosen cruise partners, we’ve curated unique journeys, taking in some of the most exotic corners of the world, that weave together inspirational cruise itineraries with our most popular tours, providing you with the best of both worlds.

SAIL IN STYLE

If you’ve not been on a cruise before, you’re in for a real treat. Accommodation, dining and bar options on a cruise ship outshine any hotel. There’s also a huge choice of entertainment, leisure and relaxation options available; it’s easy to see why cruises are so popular. And we haven’t even mentioned the best bit – you only have to unpack once!

EXTRAORDINARY TOURING

Where the ocean ends, we take over. Connecting seamlessly with your cruise, the land element of your holiday will take you places ships simply cannot go. Fully escorted by our famous National Escorts all the way, we’ll show you the iconic attractions and hidden gems, immersing you in the local culture the way only we can.

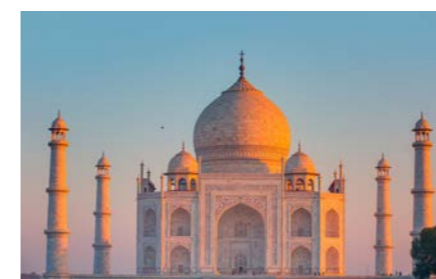
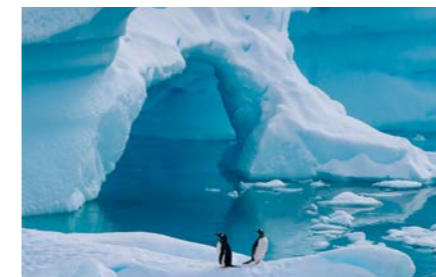
SO MUCH IS INCLUDED

Choose a Cruise & Tour holiday and get everything included, starting with return flights from the UK and all connecting transfers. Cruises include outside or balcony staterooms, dining, drinks and onboard entertainment. Land touring includes four-star hotels, all meals, touring with guide, sightseeing and entrance fees.



CONTENTS

YOUR GUIDE TO CRUISE & TOUR 4-7	
The Wendy Wu Tours difference 4	Our Cruise Partners 6
CHINA 8-17	
China by Land, Japan by Sea 20 days 10	Beijing to Singapore 26 days 14
Best of China & Japan by Land & Sea – NEW ... 24 days 12	China by Rail, Japan by Sea – NEW 28 days 16
JAPAN & SOUTH KOREA 18-31	
In Depth Japan – NEW 23 days 20	Singapore to Kyoto – NEW 25 days 26
Osaka to Seoul 22 days 22	Japan & South Korea Explored – NEW 22 days 28
Japan by Land & Sea 23 days 24	Japan by Rail & Sea – NEW 22 days 30
SOUTHEAST ASIA 32-35	
Borneo & Beyond – NEW 26 days 34	
INDIA 36-39	
India by Land, Southeast Asia by Sea 26 days 38	
AFRICA 40-45	
Mauritius, Madagascar & the Western Cape – NEW 26 days 42	Indian Ocean Explorer – NEW 23 days 44
LATIN AMERICA & ANTARCTICA 46-45	
Antarctica & Latin Wonders – NEW 20 days 48	
MORE INFORMATION 50-51	
Your questions answered 50	





THE WENDY WU TOURS DIFFERENCE

Welcome to the 2026-2027 edition of our Cruise & Tour brochure! If you are new to Wendy Wu Tours, let me just fill you in on how, with us, you can experience the extraordinary. For 25 years, we've been working on our escorted touring formula – and have plenty of awards to show we've hit on something excellent – and pack every single one of them with immersive and authentic cultural experiences. Many of our tours are fully inclusive, including everything from flights and accommodation to meals and activities, offering excellent value for money. Our Cruise & Tour concept combines one of these inclusion packed tours with all the wonders of an ocean cruise, so you get to explore some of the greatest corners of the globe, in style.

This brochure is packed with an excellent selection of carefully crafted tours that sit alongside cruise itineraries from our five wonderful cruise partners. Featuring destinations across the globe and all-inclusive, each is designed to take you on glorious adventures through enchanting destinations.

This year we welcome two new cruise partners which have allowed us to expand the tours that we offer to take in South America, Antarctica and several Indian Ocean islands. Whether you are looking for something relaxed, or an all-out adventure, there is something for everyone.

We hope you enjoy discovering your perfect adventure in the pages of this brochure and look forward to welcoming you on a Wendy Wu tour soon!



吴玲 Wendy

Wendy Wu – Owner, Wendy Wu Tours

OUR REPUTATION AND YOUR PEACE OF MIND

We have won our industry's 'Best Long Haul Specialist Tour Operator' award for 15 years running, we have a 5-star TripAdvisor rating, a Gold Award Feefo Accreditation and 98% of our customers would recommend travelling with us! We are also fully ABTA and ATOL-protected.

OUR EXPERTISE

No one knows our destinations like we do, and we are passionate about sharing the best of them with you, so there is no one better to recommend the very best tours and experiences for your holiday.

OUTSTANDING GUIDES

Our much-loved National Escorts, whose knowledge and dedication have won us the best reputation in the industry, will make your holiday with us truly extraordinary.

EXCEPTIONAL VALUE AND INCLUSIONS

Flights, accommodation, meals, touring, trains, cruises, evening shows, amazing guides and visas... we include it all.

FANTASTIC OFFERS

We are renowned for our amazing Business Class and Premium Economy upgrades, which make your holiday all the more special, and we work with leading airlines to offer you regional departures, so travelling with us is more convenient than ever. Be sure to check our website for the latest offers.

COMFORT & CONVENIENCE

We hand-pick comfortable hotels in great locations, have a 'seat and a half' policy on our coaches and include all meals on our Classic tours, so you can relax and enjoy your holiday with us, knowing everything is taken care of.

AMAZING TOURS & AUTHENTIC EXPERIENCES

On tour with us, you will be immersed in culture and history through experiences such as meeting local families, learning ancient traditions and watching cultural shows. We also include delicious local meals in each region. Look out for the 'Authentic Experiences' box on each tour page!

TIPPING MADE EASY

We will advise you how much and when to tip and our National Escorts will take care of it on your behalf.

OUR ONLY GOAL

We are only satisfied when you come back to travel with us again and again – only then do we know that we have done a good job of serving you.

OUR CRUISE PARTNERS

Say hello to our carefully chosen cruise partners



ROYAL CARIBBEAN INTERNATIONAL

Royal Caribbean International has been delivering innovation at sea since its launch in 1969. Each successive class of ships is a record-breaking architectural marvel that revolutionises holidays with the latest technology. Today, the cruise line continues to dial up the guest experience for adventurous travellers, offering bold onboard thrills, spectacular dining options, breathtaking entertainment and world-class accommodation. You'll also get exclusive benefits when booking your Royal Caribbean International cruise with a Wendy Wu tour.



CELEBRITY CRUISES

Celebrity is different. As in "you'll never want to vacation any other way" kind of different. Every detail is elevated beyond what you ever thought a vacation could be. You'll enjoy the intimate feel and thoughtful service of a smaller ship, the variety and excitement of a bigger one, and experiences you won't find anywhere else. So, if you want to explore the world or get away from it for a little while, nothing comes close to Celebrity Cruises. Enjoy exclusive benefits on board when you book your Celebrity cruise with a Wendy Wu tour.



AZAMARA

Since 2010, Azamara has delivered a unique way to travel that they call Destination Immersion experiences. Their intimate, club-like ships can fit into smaller ports that bigger vessels can't visit, and you'll experience destinations that aren't even on the map for other cruises. With smaller ports, longer stays, and more overnights than other cruise lines, Azamara makes it easier than ever to be immersed in the heart of local cultures in the ports they visit.



NORWEGIAN CRUISE LINE (NCL)

NCL's award-winning fleet has been providing an unparalleled onboard experience for over 57 years. NCL guests should be ready to experience MORE, with more to see, more to do and more to enjoy. Guests can take their pick from a wide range of onboard activities tailored to every interest; from being dazzled by award-winning entertainment to being pampered in Mandara Spa®, there is something for everyone on an NCL ship. Booking a Norwegian cruise with a Wendy Wu tour means exclusive benefits when you're onboard!



HX HURTIGRUTEN EXPEDITIONS

HX have been exploring the world for over 129 years, taking curious travellers on mindful adventures to awe-inspiring places. On comfortable, purpose-built ships, your journey will be filled with cultural encounters, wonderful wildlife, awe and inspiration as you see, do and learn. With experts and scientists on hand onboard and onshore for talks, hikes, visits and activities, daily adventures on an HX cruise come at no extra cost, and there are all-inclusive meals, drinks and wifi too. Friendly, informal and intimate with warm and professional service, your time on a HX expedition will be an adventure in all the right ways.





Discover China with Wendy Wu Tours

China is a colossal nation of unrivalled history, incredible sights and fascinating culture. With so much to discover, the best way to get to grips with this culture is to experience it, and these are our favourite ways to do just that.

WENDY'S TOP 5 CHINA EXPERIENCES

1 DUMPLING MAKING CLASS

In Chinese culture, dumplings are so much more than a delicious thing to eat, they represent comfort, hope and prosperity. In this hands-on class, be guided through the process of stretching out the dough, pinching the fillings inside and cooking the parcels to perfection. You then get to feast on the results!



2 THE GREAT WALL

There is no better way to experience the incredible Great Wall of China than a walk along it. Following the undulations of the landscapes, it passes through thick forest, across mountains and past picturesque lakes. For those after a challenge, climb up to one of the watchtowers for incredible views.



3 SICHUAN HOT POT AND OPERA

Experience two Sichuan specialties - the Sichuan hot pot, a big boiling pot of spicy broth, served with meats and vegetables that you skewer on sticks to cook in the hot liquid. Then, enjoy a performance of traditional Sichuan opera, famous for its 'face changing'.



4 EXPLORE PINGYAO

Pingyao, a UNESCO World Heritage Site, has a history stretching back over 2,000 years, and is home to what is considered China's best preserved city walls. You'll gain great insight wandering its streets and staying within the city walls, admiring the imperial architecture and the city's role as a financial centre.



5 IMPRESSION SANJIE LIU

With the magnificent karst scenery of the Li River as the backdrop, Impression Sanjie Liu is a light, music and dance spectacular set on the water and was created by Zhangyimou, director of the opening ceremony of the Beijing Olympics. Featuring folk songs and cultures from along the river, this large-scale performance is in perfect harmony with the incomparable nature around the town of Yangshuo.



CHINA BY LAND, JAPAN BY SEA

CRUISE & TOUR

20 DAYS FROM

PER PERSON **£4,690**

FLIGHT INCLUSIVE FROM THE UK

ALL MEALS

7 NIGHT ROYAL CARIBBEAN CRUISE INCLUDED

TOUR TICKLIST

- ✓ Cruise from Shanghai to Shanghai
- ✓ Walk on the Great Wall
- ✓ Face the Terracotta Army



Soak up views of the Shanghai skyline

PRICE INCLUDES

- 18 breakfasts, 17 lunches & 18 dinners
- International flights and current taxes
- Domestic transportation
- 4 star accommodation
- Touring with guides and entrance fees
- Visa fees for UK passport holders



ROYAL CARIBBEAN SPECTRUM OF THE SEAS

Full of dazzling features, Spectrum of the Seas® is designed and built for unforgettable experiences. A wealth of adventure across activities, entertainment and dining awaits your arrival. From custom drink creations crafted by robots at the Bionic Bar®, and revolutionary staterooms, to innovative dining concepts and the largest indoor sports and entertainment complex.

Your Cruise Features

- ▶ Soft drinks and all meals onboard
- ▶ Outside or balcony cabins as standard
- ▶ 200 USD onboard credit

ITINERARY

DAYS 1-2: FLY OVERNIGHT TO BEIJING

Fly overnight to Beijing, China's historical capital. On arrival at the airport, you will be met by an English-speaking guide and transferred to the hotel. Depending on your time of arrival the rest of the day is yours to start soaking up the local culture.

DAY 3: EXPLORE BEIJING

Walk through Beijing's symbolic heart, Tiananmen Square and into the sprawling magnificence of the Forbidden City, a complex full of imperial riches. Then, find harmony in the symmetry of the Temple of Heaven. This evening, dine on local delicacy, Peking Duck.

DAY 4: THE GREAT WALL

Travel out of the city to the magnificent Great Wall of China, learning a little about its long history before taking a short walk to fully appreciate this world-famous structure. Stop off at a jade factory before visiting the Sacred Way and Ming Tombs. This evening, enjoy a thrilling acrobatic show.

DAY 5: TRAVEL TO PINGYAO

Transfer to the train station and board a bullet train to Pingyao. A living museum and home to China's best preserved ancient city walls, walk the characterful streets to see the Yamen and the Rishengchang Financial House Museum.

DAY 6: TRAVEL TO XIAN

This morning is at leisure (additional option: hands-on noodle making demonstration) before travelling to Xian by bullet train.

DAY 7: EXPLORE XIAN

Today, come face to face with the Terracotta Warriors, an army created to protect China's

first emperor, Qin Shi Huang, in the afterlife. Later, stroll Xian's beautifully preserved 14th-century city walls, before a dumpling demonstration, a delicious dumpling banquet and a Tang Dynasty show.

DAY 8: TRAVEL TO CHENGDU

After breakfast, walk through the atmospheric alleyways of the Muslim Quarter, lined with delicious street food stalls. Then, transfer to the station and board a bullet train to Chengdu. This evening, dine on a Sichuan hot pot, a local speciality, and watch a fascinating face changing show.

DAY 9: EXPLORE CHENGDU

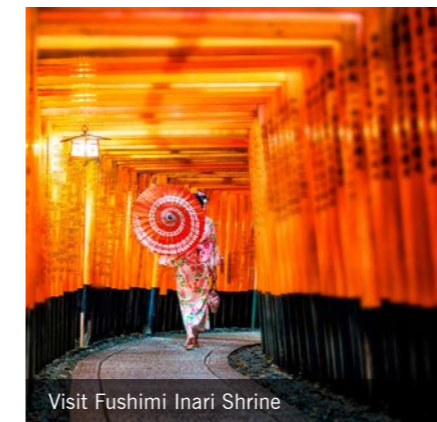
This morning is dedicated to Chengdu's most famous resident, the lovable giant panda. Visit the Dujiangyan Panda Base to learn all about them and see them relaxing, playing and chomping on bamboo. The rest of the day is at leisure (additional option: volunteer at the Panda Base).

DAY 10: TRAVEL TO SHANGHAI

Fly from Chengdu to Shanghai. Transfer to your hotel then begin your explorations, strolling along the Bund to admire the Art Deco architecture and enjoying panoramic views of the city on a Huangpu River cruise.

DAY 11: BOARD THE ROYAL CARIBBEAN SPECTRUM OF THE SEAS

After breakfast you will be met by an English-speaking guide and transferred to Shanghai's cruise terminal, Baoshan, to board your cruise. The rest of the day is free to explore the ship's facilities and settle in. Throughout your cruise, when your ship comes into port, there will be a range of excursions available



Visit Fushimi Inari Shrine



Oceanview Balcony Room, Royal Caribbean

to help you explore each destination. These excursions are at your own expense and are bookable on your cruise reservation. *Please note: sailing itinerary may vary depending on departure date.*

DAY 12: CRUISE - AT SEA

Spend the day exploring the plentiful ways to be active or relax on your cruise ship as you sail across the East China Sea toward Japan.

DAY 13: CRUISE - EXPLORE KOBE

Arrive in Kobe, a port city nestled between mountains and sea, and the first place in Japan to open up to foreign trade after the collapse of the shogunate in 1868. The city is perhaps best known for its world-renowned Kobe beef - where better to try it?

DAY 14: CRUISE - EXPLORE OSAKA/KYOTO

Arrive in Osaka, a brash, lively city that has earned the nickname 'Japan's kitchen' for its spectacular food. Easily reachable from Osaka is Kyoto; Japan's capital for over 1,000 years, it is a treasure trove of history and timeless culture. A perfect balance of old and new, it's in exploring Kyoto that you can glimpse Japan's traditional soul.

DAY 15: CRUISE - EXPLORE TOKYO

Tokyo, Japan's capital since 1868 and one of the world's largest cities, may seem a thoroughly modern cityscape at first glance, but look beyond the soaring towers and neon signs and find deeply rooted tradition and peaceful pockets of the past.

DAYS 16-17: CRUISE - AT SEA

With two days at sea you are free to make the most of your cruise ship facilities. Relax by

the pool, try out the restaurants and bars, and enjoy the range of activities and shows.

DAY 18: ARRIVE IN SHANGHAI

Disembark the Spectrum of the Seas at Shanghai's cruise port, where you will be met by an English-speaking guide and transferred to your hotel. The rest of the day is at leisure.

DAY 19: EXPLORE SHANGHAI

Continue exploring the city today, visiting the peaceful Yu Garden, the quaint Old Town and the Xintiandi area, then learn all about silk production from silkworm to loom at a silk factory. This evening, dine on a traditional Shanghaiese meal.

DAY 20: FLY SHANGHAI TO UK

Fly to the UK, arriving home the same or the following day.



Explore Pingyao

CHINA BY LAND, JAPAN BY SEA

CRUISE & TOUR

CHINA, JAPAN

PHYSICAL RATING



IS THIS TOUR FOR YOU?

Journey from China to Japan, and back again, on this Far Eastern expedition. Contrast the history and culture of these two ancient nations and see their biggest treasures with your own eyes.

PRICES & DEPARTURES

Itineraries and departure days of the week vary

2026 DATES	Days	Outside	Balcony
11 Mar - 30 Mar ¹	20	£4,690	£4,890
12 May - 01 Jun ²	21	£4,890	£5,190
29 Jul - 18 Aug ³	21	£5,960	£6,240
01 Sep - 21 Sep ⁴	21	£4,890	£5,190
14 Oct - 03 Nov ⁴	21	£4,990	£5,290

2027 DATES	Days	Outside	Balcony
09 Feb - 01 Mar ⁵	21	£4,990	£5,290
13 Apr - 03 May ⁵	21	£4,990	£5,290

CRUISE ITINERARIES

- 1 - As shown
- 2 - Shanghai | At Sea | Tokyo | Mt Fuji | Kyoto (Osaka) | At Sea | Shanghai
- 3 - Shanghai | At Sea | Kyoto (Osaka) | Nagoya | Tokyo | At Sea | Shanghai
- 4 - Shanghai | At Sea | Sakaiminato | Kyoto (Maizuru) | Niigata | Hakodate | At Sea | Shanghai
- 5 - Shanghai | At Sea | Kyoto (Osaka) | Tokyo | At Sea | Shanghai

Flight and supplement information

- Based on London Heathrow departures
- Regional UK departures available
- Flight upgrades available on request
- Single room from £1,510
- Land only from £4,090
- Tipping paid locally RMB720
- Gratuities on cruise from US\$126

Call us to register your interest for further departures of this tour.

▶ AUTHENTIC EXPERIENCES

- ▶ A Sichuan hot pot is the perfect introduction to the food of China's west. A big bubbling pot of flavourful oil is placed in the centre of the table, with a variety of raw meat and vegetables, in small pieces, which diners skewer and cook in the oil. A delicious, and fun experience!
- ▶ Gasp at the artistic and athletic abilities of Beijing's must-see Chinese acrobatic spectacular! Featuring contortionism, juggling, plate spinning and much, much more, all the action will keep you on the edge of your seat.
- ▶ Filling, delicious and a symbol of comfort, hope and prosperity, China loves dumplings! In Xian, learning how these tasty morsels are folded and cooked, before sitting down to a dumpling banquet and a Tang Dynasty show.

NEW

BEST OF CHINA & JAPAN BY LAND & SEA

CRUISE & TOUR

24 DAYS FROM

PER PERSON **£7,990**

FLIGHT INCLUSIVE FROM THE UK

ALL MEALS

11 NIGHT CELEBRITY CRUISE

TOUR TICKLIST

- ✓ Meet China's pandas
- ✓ Meet the Terracotta Warriors
- ✓ Walk on the Great Wall
- ✓ Cruise Tokyo to Tokyo
- ✓ Explore Tokyo's best bits



Visit the adorable pandas of Chengdu

PRICE INCLUDES

- 22 breakfasts, 21 lunches & 22 dinners
- International flights and current taxes
- Domestic transportation
- 4 star accommodation, plus Celebrity cruise
- Touring with guides and entrance fees
- Visa fees for UK passport holders



CELEBRITY MILLENNIUM

As part of a \$500 million fleet-wide modernization, Celebrity Millennium is making even bigger waves with phenomenal new staterooms, technologies, and design, transforming the way people open their world. Enjoy six complimentary dining venues, nine bars and lounges and a host of leisure facilities.

Your Cruise Features

- ▶ All drinks including alcohol
- ▶ Outside or balcony cabins as standard
- ▶ All meals on board

ITINERARY

DAYS 1-2: ARRIVE IN CHENGDU

Fly overnight to Chengdu, home to China's most adorable resident, the giant panda. On arrival you will be met and transferred to your hotel. The rest of the day is yours to relax and refresh, or to begin exploring.

DAY 3: VISIT THE PANDAS

This morning is dedicated to Chengdu's most famous resident, the lovable giant panda. Visit the Dujiangyan Panda Base, located outside the city at the foot of the mountains that are the bears' natural habitat. Here you'll learn about pandas and watch them relaxing and playing. The rest of the day is at leisure.

DAY 4: TRAVEL TO XIAN

Take the super-fast bullet train to Xian. On arrival, soak up the sights, sounds and atmosphere of the lively Muslim Quarter then enjoy the rest of the day at leisure.

DAY 5: EXPLORE XIAN

This morning, come face to face with the Terracotta Warriors, an army created to protect China's first emperor, Qin Shi Huang, in the afterlife, and one of the greatest archaeological discoveries of the 20th century. Continue to a workshop to see artisans modelling smaller warriors in the style of their ancient counterparts. Stroll on Xian's magnificent 12 metre high city walls for views over the city, before a dumpling demonstration, a delicious dumpling banquet and a Tang Dynasty show.

DAY 6: TRAVEL TO PINGYAO

Transfer to the train station and board a bullet train to Pingyao, a living museum and home to beautifully preserved 14th-century city walls.

DAY 7: TRAVEL TO BEIJING

Embark on a tour of Pingyao, wandering the old, cobbled streets before a visit to the Rishengchang Financial House Museum. Transfer to the station and board a bullet train bound for China's capital city, Beijing.

DAY 8: WALK THE GREAT WALL

Travel out of the city to the magnificent Great Wall of China, learning a little about its long history before taking a short walk to fully appreciate this world-famous structure. Stop off at a jade factory before visiting the Sacred Way and Ming Tombs. Return to Beijing where this evening, you'll enjoy a thrilling acrobatic show.



Walk on the Great Wall of China



DAY 9: EXPLORE BEIJING

Walk through Beijing's symbolic heart, Tiananmen Square and into the sprawling magnificence of the Forbidden City, a complex full of imperial riches. Then, find harmony in the symmetry of the Temple of Heaven. This evening, dine on local delicacy, Peking Duck.

DAY 10: BEIJING TO TOKYO

Bid farewell to China and board a flight to Tokyo, capital of Japan. On arrival, you'll be transferred to your hotel and have the rest of the day at leisure.

DAY 11: EXPLORE TOKYO

Embark on a full day tour of Tokyo, beginning at the atmospheric Sensoji, the oldest Buddhist temple in the city. Then, ascend the close by Tokyo Skytree to admire panoramic views over Tokyo's urban sprawl before preparing your own lunch in a hands-on sushi making class, where you can pick up tips and tricks from a chef. Later stroll around the Imperial Palace Park followed by a visit the serene Meiji Shrine. Finally, taste local snacks at Takeshita Street and and pause for a photo op at the famous Shibuya Crossing.

DAY 12: BOARD THE CELEBRITY MILLENNIUM

After breakfast you will be transferred to Yokohama cruise terminal to board your cruise. The rest of the day is free to explore the ship's facilities and settle in. Throughout your cruise, when your ship comes into port, there will be a range of excursions available to help you explore each destination. These excursions are at your own expense and are bookable on your cruise reservation.

DAY 13 CRUISE - EXPLORE MOUNT FUJI

Port at Shimizu, a city of medieval castle ruins, ancient pine groves and traditional gardens. Here, you are ideally located for viewing Mount Fuji (weather dependent) or exploring the series of fascinating cultural sights around its base.

DAY 14: CRUISE - EXPLORE KYOTO

Arrive in Osaka, the closest port to the timeless city of Kyoto, Japan's capital for over 1,000 years and a treasure trove of history and culture. Spend the day exploring among ancient architecture, soaking up a rich, age-old culture or sampling some of the city's culinary delights.

DAY 15: CRUISE - KYOTO

Spend a second day at port in Osaka, making the most of the excellent range of facilities onboard your cruise ship or continuing your explorations of Kyoto.

DAY 16: CRUISE - EXPLORE KOCHI

Port at Kochi. A surfer hang out with a UNESCO Global Geopark coastline, plentiful great outdoors and bags of rustic charm, Kochi is a wonderful place to while away a day.

DAY 17: CRUISE - AT SEA

Spend the day enjoying the plentiful activities and facilities that are available onboard the Celebrity Millennium as you cruise across the Sea of Japan.

DAY 18: CRUISE - EXPLORE BUSAN

Hello, South Korea! Port at the bustling city of Busan. Boasting mountains, beaches, and hot springs, this is a city full of small-town charm.

DAY 19: CRUISE - EXPLORE NAGASAKI

Head back to Japan, porting at Nagasaki. Like Hiroshima, Nagasaki is best known for the events of the 9th of August 1945 but there is so much more to it. Backed by rolling hills and forested islands, with unspoilt beaches, European-style architecture, and ancient roots, it is a delight to explore.

DAY 20: CRUISE - EXPLORE KAGOSHIMA

Arrive at Kagoshima, a city at the southern tip of the island of Kyushu. Watched over by the active Sakurajima volcano and rich in history and delicious food, and surrounded by glorious nature, there is plenty to discover here.

DAY 21: CRUISE - AT SEA

Make the most of your cruise ship facilities today - you could relax by the pool, try out the restaurants and bars, and enjoy the range of activities and shows.

DAY 22: CRUISE - EXPLORE TOKYO

Arrive back in Tokyo. Today you are free to enjoy a final day on the cruise ship, or head out to explore Tokyo or the surrounding area on an excursion.

DAY 23: DISEMBARK THE CELEBRITY MILLENNIUM

Bid farewell to the Celebrity Millennium. Met by a guide, you will be transferred to your hotel in Tokyo.

DAY 24: FLY TOKYO TO UK

Fly to the UK, arriving home the same or the following day.

BEST OF CHINA & JAPAN BY LAND & SEA

CRUISE & TOUR

CHINA, JAPAN, SOUTH KOREA

PHYSICAL RATING



IS THIS TOUR FOR YOU?

Explore two great, ancient nations by land and sea, immersing yourself in the age-old history and culture of each and exploring their most iconic sights. Venture across China from panda-filled Chengdu to Beijing by land before flying to Tokyo, to continue the adventure by cruise ship.

PRICES & DEPARTURES

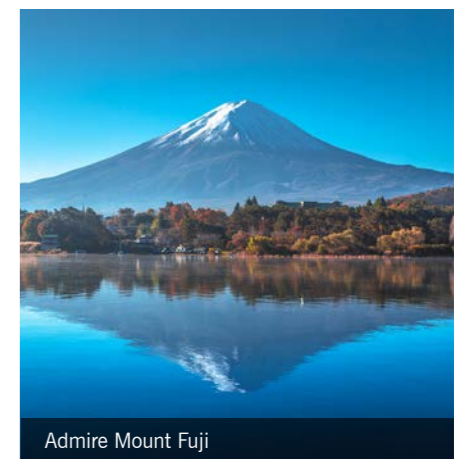
Departing Friday returning Sunday

2026 DATES	Outside	Balcony
10 Apr - 03 May	£7,990	£8,590

Flight and supplement information

- Based on London Heathrow departures and facilities that are available onboard the Celebrity Millennium as you cruise across the Sea of Japan.
- Regional UK departures available
- Flight upgrades available on request
- Single room outside from £3,390
- Land only from £7,190
- Tipping payable locally 510 RMB (China)
- Gratuities on cruise £151

Call for our 2027 pricing and departures



Admire Mount Fuji

▶ AUTHENTIC EXPERIENCES

- ▶ Dine on delicious, doughy Shui Jiao dumplings, a Xian speciality, before getting swept away in the sights and sounds of the Tang Dynasty with a spectacular show of traditional music, dancing and performance.
- ▶ Gasp at the athletic abilities of the artists who perform in Beijing's must-see Chinese acrobatic spectacular! The show features all sorts of stunts and acts such as contortionism, juggling, plate spinning and much, much more. All the action will keep you firmly on the edge of your seat.
- ▶ A Sichuan hot pot is the perfect introduction to the food of China's west. A big bubbling pot of flavourful oil is placed in the centre of the table, with a variety of raw meat and vegetables, in small pieces, which diners skewer and cook in the oil. A delicious, and fun experience!

BEIJING TO SINGAPORE

CRUISE & TOUR

26 DAYS FROM

PER PERSON **£8,390**

FLIGHT INCLUSIVE FROM THE UK

ALL MEALS

12 NIGHT CELEBRITY CRUISE INCLUDED

TOUR TICKLIST

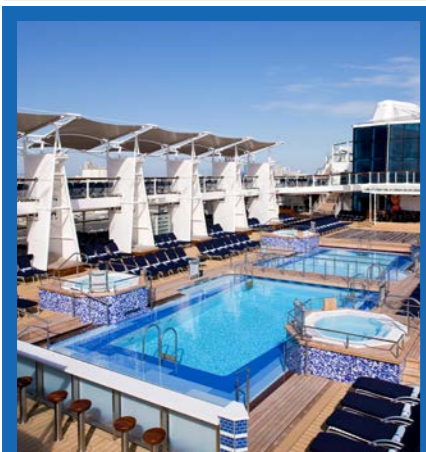
- ✓ Cruise from Hong Kong to Singapore
- ✓ Walk on the Great Wall
- ✓ Face the Terracotta Army
- ✓ Explore Hong Kong



Explore the Forbidden City

PRICE INCLUDES

- 24 breakfasts, 23 lunches & 24 dinners
- International flights and current taxes
- Domestic transportation
- 4 star accommodation, plus Celebrity cruise
- Touring with guides and entrance fees
- Visa fees for UK passport holders



CELEBRITY SOLSTICE

Celebrity Solstice® is one of the most decorated ships at sea. So it's no wonder that it's full of "firsts". Like the first Lawn Club at sea and the first Hot Glass Show. The first cruise line to have five women, also known as "the Leading Ladies" redesign, and redecorate the staterooms.

Your Cruise Features

- ▶ All drinks including alcohol
- ▶ Outside cabins as standard
- ▶ All meals onboard

ITINERARY

DAYS 1-2: FLY OVERNIGHT TO BEIJING

Fly overnight to Beijing, China's historical capital. On arrival at the airport, you will be met by an English-speaking guide and transferred to the hotel. Depending on your time of arrival the rest of the day is yours to start soaking up the local culture.

DAY 3: EXPLORE BEIJING

Walk through Beijing's symbolic heart, Tiananmen Square and into the sprawling magnificence of the Forbidden City, a complex full of imperial riches. Then, find harmony in the symmetry of the Temple of Heaven. This evening, dine on local delicacy, Peking Duck.

DAY 4: THE GREAT WALL

Travel out of the city to the magnificent Great Wall of China, learning a little about its long history before taking a short walk to fully appreciate this world-famous structure. Stop off at a jade factory before visiting the Sacred Way and Ming Tombs. This evening, enjoy a thrilling acrobatic show.

DAY 5: TRAVEL TO PINGYAO

Transfer to the train station and board a bullet train to Pingyao. A living museum and home to China's best preserved old city walls, walk the characterful streets to see the Yamen and the Rishengchang Financial House Museum.

DAY 6: TRAVEL TO XIAN

This morning is at leisure (additional option: hands-on noodle making demonstration) before travelling to Xian by bullet train.

DAY 7: EXPLORE XIAN

Today, come face to face with the Terracotta Warriors, an army created to protect China's

first emperor, Qin Shi Huang, in the afterlife. Later, stroll Xian's beautifully preserved 14th-century city walls, before a dumpling demonstration, a delicious dumpling banquet and a Tang Dynasty show.

DAY 8: TRAVEL TO CHENGDU

After breakfast, walk through the atmospheric alleyways of the Muslim Quarter, lined with delicious street food stalls. Then, transfer to the station and board a bullet train to Chengdu. This evening, dine on a Sichuan hot pot, a local speciality, and watch a fascinating face changing show.

DAY 9: EXPLORE CHENGDU

This morning is dedicated to Chengdu's most famous resident, the lovable giant panda. Visit the Dujiangyan Panda Base to learn all about them and see them relaxing, playing and chomping on bamboo. The rest of the day is at leisure (additional option: volunteer at the Panda Base).

DAY 10: TRAVEL TO HONG KONG

Fly from Chengdu to Hong Kong. Transfer to your hotel and spend the rest of the day at leisure.

DAY 11: EXPLORE HONG KONG

Spend the day exploring under the iconic skyline of Hong Kong. Ride the tram up Victoria Peak for breathtaking views and a fascinating walking tour. Return to Central and ride the Central Escalator of Tai Kwun, the city's new artistic hub. Continue to Hollywood Road and Man Mo Temple. Enjoy a dim sum making demonstration, before eating it for lunch, then head for the West Kowloon Cultural District.



DAY 12: BOARD THE CELEBRITY SOLSTICE

After breakfast you will be met by an English-speaking guide and transferred to Hong Kong's cruise terminal to board your cruise. The rest of the day is free to explore the ship's facilities and settle in. Throughout your cruise, when your ship comes into port, there will be a range of excursions available to help you explore each destination. These excursions are at your own expense and are bookable on your cruise reservation.

DAY 13: CRUISE - AT SEA

Spend the day getting to know the plentiful activities available on your cruise ship.

DAY 14: CRUISE - EXPLORE HANOI

Port in Halong Bay for Vietnam's capital city, Hanoi. Halong Bay itself is a spectacular UNESCO-listed seascape of limestone karst towers and cliffs, while Hanoi is a metropolis where you can discover layer upon layer of history on grand, bustling streets.

DAY 15: CRUISE - HANOI

Spend today at port in Halong Bay, making the most of the excellent facilities onboard your cruise ship.

DAY 16: CRUISE - EXPLORE HUE

Port at Chan May to explore the imperial history of Hue or the relaxed vibes of Danang.

DAY 17: CRUISE - AT SEA

As you sail southwards along Vietnam's coastline, continue living the high life on your cruise ship.

DAY 18: CRUISE - EXPLORE SAIGON

Port at Phu My and delve into the frenetic vibrancy of the city of Saigon.

DAY 19: CRUISE - AT SEA

Today, why not sip a drink at one of your cruise ship's bars, try out a new sport or visit the spa, as you sail across the Gulf of Thailand.

DAY 20: CRUISE - EXPLORE BANGKOK

Arrive at Bangkok (Laem Chabang), Thailand's vibrant and heritage-filled capital city.

DAY 21: CRUISE - BANGKOK

Spend today at port in Bangkok or enjoying your cruise ship's many amenities.

DAY 22: CRUISE - EXPLORE KO SAMUI

Discover this tropical paradise island with its waving palms, white sands, and azure waters.

DAY 23: CRUISE - AT SEA

Savour your final day at sea, making sure to do all your favourite cruise ship activities as you cross into Malaysian waters.

DAY 24: ARRIVE IN SINGAPORE

Disembark the Celebrity Solstice at Singapore's cruise port, where you will be met and transferred to your hotel.

DAY 25: EXPLORE SINGAPORE

Embark a full day tour of Singapore. Begin in the historic neighbourhoods of Chinatown and Kampong Glam then pass Parliament House on the way to Merlion Park where you'll get excellent views over Marina Bay. Arrive at the Fullerton Hotel via a hidden walkway for a delicious afternoon tea. Cruise the Singapore River as the sun sets then, post dinner, explore the magnificent Gardens by the Bay.

DAY 26: FLY SINGAPORE TO UK

Fly to the UK, arriving home the same or the following day.

BEIJING TO SINGAPORE

CRUISE & TOUR

CHINA, HONG KONG, VIETNAM, THAILAND, SINGAPORE

PHYSICAL RATING



IS THIS TOUR FOR YOU?

An expedition across Asia, by land and sea, travel from the rich history of Beijing, through China to Hong Kong, following the coast of Southeast Asia to reach the marvellous modern metropolis of Singapore.

PRICES & DEPARTURES

Departure days of the week vary

2027 DATES

04 Mar - 29 Mar **£8,390**

Flight and supplement information

- Based on London Heathrow departures
- Regional UK departures available
- Flight upgrades available on request
- Single room from £4,180
- Land only from £7,690
- Tipping paid locally RMB 510 + HKD 100 + SGD 15
- Gratuities on cruise £165

Dates don't work? Call our Tailormade team who can book this itinerary as a private tour, with timings that suit you.



Enjoy an acrobatic spectacular

▶ AUTHENTIC EXPERIENCES

- ▶ Gasp at the artistic and athletic abilities of Beijing's must-see Chinese acrobatic spectacular! Featuring contortionism, juggling, plate spinning and much, much more, all the action will keep you on the edge of your seat.
- ▶ Filling, delicious and a symbol of comfort, hope and prosperity, China loves dumplings! In Xian, learn how these tasty morsels are folded and cooked, before sitting down to a dumpling banquet and a Tang Dynasty show.
- ▶ A Hong Kong institution, dim sum are bite-sized delights served as part of the ritual of 'yum cha' (drink tea). Enjoy a dim sum demonstration, learning all about the different varieties, and how they are handcrafted and served. You'll dine on the delicious results for lunch.

NEW

CHINA BY RAIL, JAPAN BY SEA

CRUISE & TOUR

28 DAYS FROM

PER PERSON
£8,990FLIGHT INCLUSIVE
FROM THE UK

ALL MEALS

11 NIGHT NORWEGIAN
CRUISE INCLUDED

TOUR TICKLIST

- ✓ Walk on the Great Wall
- ✓ Cruise the spectacular Li River
- ✓ Cruise Hong Kong to Tokyo
- ✓ Explore Tokyo's best bits



Walk on the Great Wall of China

PRICE INCLUDES

- 26 breakfasts, 25 lunches & 26 dinners
- International flights and current taxes
- Domestic transportation
- 4 star accommodation, plus NCL cruise
- Touring with guides and entrance fees
- Visa fees for UK passport holders



NORWEGIAN JADE

Onboard the Norwegian Jade, every moment is unforgettable! From vibrant entertainment to the wide range of delicious complimentary and speciality restaurants, there is so much to explore. Relax in a hot tub, the spa and by the pool, watch a show, or live it up in the casino or at a unique bar or lounge. You can always find a moment of calm in your comfortable, refurbished stateroom before heading out to do it all over again.

Your Cruise Features

- ▶ NCL's 'More at Sea Package', with enhanced beverages including premium spirits, upgraded speciality dining options and more!
- ▶ Access to the Mandara Spa and four outdoor hot tubs to relax in.
- ▶ Range of shows, classes, lectures and trivia activities to get involved in.

ITINERARY

DAYS 1-2: ARRIVE IN BEIJING

Fly overnight to Beijing, China's historical capital. On arrival at the airport, you will be met and transferred to your hotel. Depending on your time of arrival the rest of the day is yours to start soaking up the local culture.

DAY 3: EXPLORE BEIJING

Walk through Beijing's symbolic heart, Tiananmen Square and into the sprawling magnificence of the Forbidden City, a complex full of imperial riches. Then, find harmony in the symmetry of the Temple of Heaven. This evening, dine on local delicacy, Peking Duck.

DAY 4: THE GREAT WALL

Travel out of the city to the magnificent Great Wall of China, learning a little about its long history before taking a short walk to fully appreciate this world-famous structure. This evening, enjoy a thrilling acrobatic show.

DAY 5: TRAVEL TO PINGYAO

Transfer to the train station and board a bullet train to Pingyao. A living museum, walk the characterful streets and see China's best preserved old city wall.

DAY 6: TRAVEL TO XIAN

This morning is at leisure (additional option, payable locally: hands-on noodle making demonstration) before travelling to Xian by bullet train.

DAY 7: EXPLORE XIAN

This morning, come face to face with the enigmatic Terracotta Warriors and learn more about their purpose. Later, stroll Xian's 14th-century city wall, before a dumpling demonstration, a dumpling banquet and Tang Dynasty show.

DAY 8: TRAVEL TO CHENGDU

Board a bullet train to Chengdu. This evening, dine on a delicious Sichuan hot pot, a local speciality, and watch a fascinating face changing show.

DAY 9: EXPLORE CHENGDU

This morning is dedicated to Chengdu's most famous resident, the lovable giant panda, with a visit to the Dujiangyan Panda Research Base (additional option, payable locally: volunteer at the Panda Base). Return to Chengdu where you'll take a stroll around People's Park.

DAY 10: TRAIN TO GUILIN

Board a bullet train to the city of Guilin, beautifully set on the Li River.

DAY 11: LI RIVER CRUISE

Float gently through the dramatic karst scenery of the Li River to reach the charming town of Yangshuo. Next, explore Yangshuo, wandering the cobbled streets and browsing the local market. This evening, enjoy the Impression of Liu Sanjie show.

DAY 12: AROUND YANGSHUO

Spend the morning exploring the spectacular countryside around Yangshuo. Return to Guilin via the impressive Reed Flute Caves.

DAY 13: TRAIN TO HONG KONG

All aboard the bullet train to Hong Kong! On arrival, the rest of the day is at leisure to start exploring this incredible city.

DAY 14: EXPLORE HONG KONG

Spend the day exploring under the iconic skyline of Hong Kong. You'll ride the tram up Victoria Peak, visit Man Mo Temple, explore



the West Kowloon Cultural District and enjoy a dim sum making demonstration.

DAY 15: BOARD THE NORWEGIAN JADE

After breakfast you will be transferred to Hong Kong's cruise terminal to board your cruise. The rest of the day is free to explore the ship's facilities and settle in. Throughout your cruise, when your ship comes into port, there will be a range of excursions available to help you explore each destination. These excursions are at your own expense and are bookable on your cruise reservation.

DAY 16: CRUISE - EXPLORE KAOHSIUNG

Welcome to Taiwan! Dock in the port of Kaohsiung, a city considered Taiwan's cultural hotspot, with plenty of excellent museums, waterside parks and cafes to discover.

DAY 17: CRUISE - EXPLORE TAIPEI

Pause at the port of Keelung which gives easy access to Taiwan's capital, Taipei. A modern city full of a timeless culture that blends Chinese, Japanese, Southeast Asian and Western influences, you'll find plenty to explore.

DAY 18: CRUISE - EXPLORE MIYAKOJIMA

Hello Japan! Dock at Miyakojima, one of Japan's tropical Okinawa islands. You could relax on one of the white sand beaches, discover some of Japan's best diving and snorkelling spots or learn more about the region's unique cultural traditions.

DAY 19: CRUISE - AT SEA

Spend this day at sea making the most of the Norwegian Jade's excellent range of facilities and activities. Try the different restaurants, watch live performances featuring a talented cast of performers and musicians or browse the shopping boutiques for souvenirs.

DAY 20: CRUISE - EXPLORE NAGASAKI

Nagasaki is best known for the events of the 9th of August 1945 but there is so much more to it. Backed by rolling hills and forested islands, with unspoilt beaches, European-style architecture, and ancient roots, it is a delight to explore.

DAY 21: CRUISE - EXPLORE KAGOSHIMA

Today's port of call is the sunny city of Kagoshima, nestled at the foot of Sakurajima Volcano. While the city itself has historic castles and traditional gardens to explore, there are also volcanic hot springs to soak in and delicious local food to try.

DAY 22: CRUISE - EXPLORE HIROSHIMA

Arrive at Hiroshima. The first city in the world to feel the power of the atomic bomb

in 1945, Hiroshima has emerged from the ashes as a cosmopolitan and peaceful place. Consider visiting the tranquil Peace Park to learn about and reflect on the past.

DAY 23: CRUISE - EXPLORE KOCHI

Port at Kochi. A surfer hang out with a UNESCO Global Geopark coastline, plentiful great outdoors and a magnificent 400 year old castle, Kochi is a wonderful place to while away a day.

DAY 24: CRUISE - EXPLORE KYOTO

Arrive in Osaka, the closest port to the timeless city of Kyoto, Japan's capital for over 1,000 years and a treasure trove of history and culture. Spend the day exploring among ancient architecture, soaking up a rich, age-old culture or sampling some of the city's culinary delights.

DAY 25: CRUISE - MOUNT FUJI

Port at Shimizu. Here, you are ideally located for viewing Mount Fuji or exploring the series of fascinating cultural sights around its base.

DAY 26: ARRIVE IN TOKYO

Bid farewell to the Norwegian Jade. Met by a guide, you will be transferred to your hotel in Tokyo where the rest of the day is at leisure.

DAY 27: DISCOVER TOKYO

Embark on a full day exploration of Tokyo, starting at vibrant Sensoji, the city's oldest temple, before ascending the towering Tokyo Skytree. Enjoy a sushi making masterclass and dine on your creation for lunch, fuel for an afternoon that features the Meiji Jingu Shrine.

DAY 28: FLY TOKYO TO UK

Fly to the UK, arriving home the same or the following day.



View the iconic Mount Fuji

CHINA BY RAIL, JAPAN BY SEA

CRUISE & TOUR

CHINA, HONG KONG, TAIWAN, JAPAN

PHYSICAL RATING



IS THIS TOUR FOR YOU?

All aboard this exciting adventure by rail and ship! Travel across China by high-speed train, taking in the must-see sights as you go before cruising from Hong Kong to Japan (via Taiwan) to explore the history and culture of this amazing archipelago.

PRICES & DEPARTURES

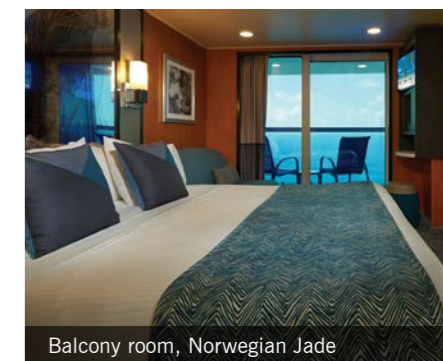
Departing Monday returning Sunday

2027 DATES	Outside	Balcony
08 Feb - 07 Mar	£8,990	£10,190

Flight and supplement information

- Based on London Heathrow departures
- Regional UK departures available
- Flight upgrades available on request
- Single room from £3,290
- Land only from £8,190
- Tipping paid locally RMB 740
- Gratuities on cruise £171

Dates don't work? Call our Tailormade team who can book this itinerary as a private tour, with timings that suit you.



Balcony room, Norwegian Jade

▶ AUTHENTIC EXPERIENCES

- ▶ With the magnificent karst scenery of the Li River as the backdrop, Impression Sanjie Liu is a light, music and dance spectacular set on the water. Featuring folk music from along the river, this large-scale performance is in perfect harmony with the incomparable nature around the town of Yangshuo.
- ▶ A Hong Kong institution, dim sum are bite-sized delights served as part of the ritual of 'yum cha' (drink tea). Enjoy a dim sum demonstration, learning all about the different varieties, and how they are handcrafted and served. You'll dine on the delicious results for lunch.
- ▶ True sushi is an artform, a foodie reflection of the cultural values of respect for nature, craftsmanship, and community. Supervised by a sushi chef, take part in a sushi making class in Tokyo picking up basic sushi skills before sitting down with your fellow travellers to dine on the results.

Discover Japan & South Korea with Wendy Wu Tours

Neighbours on the far eastern edge of Asia, Japan and South Korea are home to epic histories, glorious nature and rich, often quirky cultures. Wonderfully accessible, immersing yourself in this heritage while exploring is a must!

WENDY'S TOP 6 JAPAN & SOUTH KOREA EXPERIENCES



1 SUSHI MAKING CLASS

True sushi is an artform, with chefs training for 10 years to be able to create rolls that are a harmonious balance of flavour, texture, and aesthetic. Take part in a sushi making class in Tokyo picking up basic sushi skills before sitting down with your fellow travellers to dine on the results.



2 SAKE TASTING

Embark on a tour of a sake brewery. You'll see first hand the traditional process of creating the rice wine that is Japan's national beverage and has been part of the country's culture for over 2,500 years. Used for religious ceremonies, festivals and drinking games, be sure to sample a few tipples yourself.



3 TEA CEREMONY

Full of choreographed movement and symbolism, the ritual preparation and presentation of matcha tea gives the perfect snapshot of traditional Japanese culture. Experiencing a tea ceremony for yourself will give a glimpse at the philosophies that have flourished in Japan over hundreds of years.



4 SNOW MONKEYS

Observe delightful Japanese macaques as they bathe in natural hot spring pools close to the alpine town of Yudanaka. After a scenic walk through a forested ravine, the pool is set among the trees where you'll see the troop playing, socialising and relaxing in the thermal waters.



5 KIMCHI MAKING DEMONSTRATION

A staple food of South Korea, eaten with almost every meal, kimchi is fermented vegetables made most often with napa cabbage or Korean radish and a wide selection of seasonings. This demonstration gives you the opportunity to pick up tips on the easy way to make kimchi and experience a bit of Korean food culture.



6 SAMURAI LIFE

The Nomura Samurai House in Kanazawa, the estate of a high-ranking samurai family through 11 generations, gives a fascinating glimpse at lifestyles of the past. Savour the tranquillity of the Japanese gardens, sip matcha in the upstairs tea room and admire armour and weapons as you explore.



NEW

IN DEPTH JAPAN

CRUISE & TOUR

23 DAYS FROM

PER PERSON **£10,290**

FLIGHT INCLUSIVE FROM THE UK

ALL MEALS

14 NIGHT NORWEGIAN CRUISE INCLUDED

TOUR TICKLIST

- ✓ Discover timeless Kyoto
- ✓ Visit the snow monkeys
- ✓ Eat traditional local dishes
- ✓ Cruise Tokyo - Tokyo



Explore traditional Japan in Kanazawa

PRICE INCLUDES

- 21 breakfasts, 22 lunches & 21 dinners
- International flights and current taxes
- Domestic transportation
- 4 star accommodation, plus NCL Cruise
- Touring with guides and entrance fees
- Visa fees for UK passport holders



NORWEGIAN JADE

Onboard the Norwegian Jade, every moment is unforgettable! From vibrant entertainment to the wide range of delicious complimentary and speciality restaurants, there is so much to explore. Relax in a hot tub, the spa and by the pool, watch a show, or live it up in the casino or at a unique bar or lounge. You can always find a moment of calm in your comfortable, refurbished stateroom before heading out to do it all over again.

Your Cruise Features

- ▶ NCL's 'More at Sea Package', with enhanced beverages including premium spirits, upgraded speciality dining options, and more!
- ▶ Access to the Mandara Spa and relaxing hot tubs on deck.
- ▶ A range of shows, classes, lectures and trivia games to get involved in.

ITINERARY

DAYS 1-2: ARRIVE IN OSAKA

Fly overnight to the lively, fast-paced city of Osaka. On arrival, you will be transferred to your hotel in Kyoto, where the rest of the day is yours to relax or begin exploring.

DAY 3: EXPLORE KYOTO

Spend the day discovering the treasures of the timeless city of Kyoto, Japan's ancient capital. You'll begin at the enchanting Kinkaku-ji, also known as the 'Golden Pavilion', before contemplating the famous Zen Garden at Ryoan-ji. Later, explore the serene Arashiyama Bamboo Forest and Tagetsukyo Bridge.

DAY 4: MORE KYOTO

Soak up more of Kyoto's rich history with a wander through the beautiful Kiyomizu temple complex. Lunch will be a traditional sukiyaki (hotpot) before a sake tasting at the Matsui Shuzou Museum. Then, climb the forested slopes of Fushimi Inari Shrine, passing through the many vermilion red torii gates.

DAY 5: RIDE A BULLET TRAIN

Board one of Japan's renowned shinkansen (bullet trains) to Nagano, a city set in the Japanese Alps. This afternoon, soak up the tranquillity of Zenkoji, a 7th-century temple before arriving at your traditional ryokan accommodation for a soak in an onsen (hot spring bath) and dinner.

DAY 6: VISIT THE SNOW MONKEYS

This morning, visit Jigokudani Monkey Park, home to the famous hot spring bathing Japanese macaques, also known as snow monkeys. Travel to the shores of Lake Kawaguchi and Oishi Park for magnificent

views of the iconic Mount Fuji. Continue to Tokyo, Japan's dazzling capital city.

DAY 7: EXPLORE TOKYO

Spend the day discovering Tokyo. Visit Senso-ji, Tokyo's oldest Buddhist temple then ascend the Tokyo Skytree for panoramic views over the city. Lunch today is extra special, as you'll be making your own! Enjoy a sushi making class before dining on your creations. This afternoon, see the Imperial Palace and Meiji Jingu Shrine and walk along Takeshita Street to taste some local treats.

DAY 8: BOARD THE NORWEGIAN JADE

After breakfast you will be transferred to Tokyo's cruise terminal to board your cruise. The rest of the day is free to explore the ship's facilities and settle in. Throughout your cruise, when your ship comes into port, there will be a range of excursions available to help you explore each destination. These excursions are at your own expense and are bookable on your cruise reservation.

DAY 9: CRUISE - SENDAI

Port at Ishinomaki for Sendai. Nestled between the sea and the mountains the city is full of history, culture and spectacular food, while the landscapes around it boast volcanoes, rolling hills and hot springs.

DAY 10: CRUISE - HAKODATE

Discover Hakodate, a historic city famous for its star-shaped fort and the delicious kaisen-don, a seafood rice bowl.

DAY 11: CRUISE - AOMORI

Aomori is rich in maritime heritage, and is surrounded by a rugged coastline, apple orchards, the scenic Lake Towada and Oirase Gorge.



COACH CRUISE TRAIN

DAY 12: CRUISE - AKITA

Surrounded by mountains, forests and plentiful hot springs, Akita also offers a glimpse at the samurai way of life in historic Kakanodate.

DAY 13: CRUISE - KANAZAWA

From port today you can savour the beauty of Kenrokuen, one of the Three Great Gardens of Japan, admire the artworks at the 21st Century Museum of Contemporary Art or wander through Kanazawa's beautiful samurai and geisha districts.

DAY 14: CRUISE - BUSAN

Hello, South Korea! Port at the bustling city of Busan. Boasting mountains, beaches, and hot springs, this is a city full of small-town charm.

DAY 15: CRUISE - NAGASAKI

Head back to Japan, porting in Nagasaki, a city best known for the events of 9th August 1945. Backed by rolling hills and forested islands, it is a delight to explore.

DAY 16: CRUISE - KAGOSHIMA

Arrive at Kagoshima, a city at the southern tip of the island of Kyushu. Watched over by the active Sakurajima volcano and rich in history and delicious food, and surrounded by glorious nature, there is plenty to discover here.

DAY 17: CRUISE - HIROSHIMA

Arrive at Hiroshima. The first city in the world to feel the power of the atomic bomb in 1945, Hiroshima has emerged for the ashes as a cosmopolitan and peaceful place. Consider visiting the tranquil Peace Park to learn about and reflect on the past.

DAY 18: CRUISE - KOCHI

A surfer hang out with a UNESCO Global Geopark coastline, plentiful great outdoors and a magnificent 400 year old castle, Kochi is a wonderful place to while away a day.

DAY 19: CRUISE - KYOTO

Arrive in Osaka, the closest port to Kyoto. Spend another day exploring among ancient architecture, soaking up a rich, age-old culture or enjoy the buzz of Osaka.

DAY 20: CRUISE - NAGOYA

Built around its magnificent castle, Nagoya has long been a centre of industry, so as well as fascinating museums around manufacturing and technology, there are gardens, shrines and delicious food to discover.

DAY 21: CRUISE - MOUNT FUJI

Port at Shimizu, a city of medieval castle ruins, ancient pine groves and traditional gardens. Here, you are ideally located for viewing Mount Fuji or exploring the series of fascinating cultural sights around its base.

DAY 22: ARRIVE IN TOKYO

Bid farewell to the Norwegian Jade. Met by a guide, you will be transferred to your hotel in Tokyo where the rest of the day is at leisure.

DAY 23: FLY TOKYO TO UK

Fly to the UK, arriving home the same or the following day.

IN DEPTH JAPAN

CRUISE & TOUR

JAPAN, SOUTH KOREA

PHYSICAL RATING



IS THIS TOUR FOR YOU?

Dive into the epic history and rich culture of Japan on this in-depth exploration by both land and sea. Explore Kyoto and visit the adorable snow monkeys before cruising around Honshu, Japan's largest island.

PRICES & DEPARTURES

Departure days of the week vary

2026 DATES	Outside	Balcony
22 Oct - 13 Nov	£10,290	£11,490
2027 DATES	Outside	Balcony
3 Apr - 25 Apr	£10,990	

Flight and supplement information

- Based on London Heathrow departures
- Regional UK departures available
- Flight upgrades available on request
- Single room outside from £4,790
- Land only from £9,490
- Gratuities on cruise £217

Call us to register your interest for further departures of this tour.



Admire Nagoya castle

▶ AUTHENTIC EXPERIENCES

- ▶ Sake is much more than Japan's national drink, it's an essential part of the country's customs, traditions, and celebrations. Learn all about the strict customs that dictate how sake is produced and how it is drunk before tasting this world-famous rice wine for yourself.
- ▶ Comfortable, reliable, efficient, punctual and fast, Japan's extensive rail network is world renowned, so what better way to explore? Riding a bullet train, known as shinkansen locally, is an essential Japan experience, whizzing up to 320 kilometres an hour to get you from city to city.
- ▶ True sushi is an artform, a foodie reflection of the cultural values of respect for nature, craftsmanship, and community. Supervised by a sushi chef, take part in a sushi making class in Tokyo picking up basic sushi skills before sitting down with your fellow travellers to dine on the results.

OSAKA TO SEOUL

CRUISE & TOUR

22 DAYS FROM

PER PERSON £8,290

FLIGHT INCLUSIVE FROM THE UK

ALL MEALS

12 NIGHT CELEBRITY CRUISE

TOUR TICKLIST

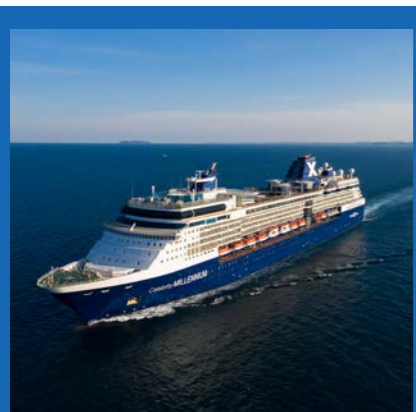
- ✓ Cruise Tokyo to Seoul
- ✓ Discover the history of Kyoto
- ✓ Gaze on Mount Fuji
- ✓ Explore vibrant Seoul



Admire the beautiful Kinkakuji Temple

PRICE INCLUDES

- 20 breakfasts, 19 lunches & 20 dinners
- International flights and current taxes
- Domestic transportation
- 4 star accommodation, plus Celebrity cruise
- Touring with guides and entrance fees
- Visa fees for UK passport holders



CELEBRITY MILLENNIUM

As part of a \$500 million fleet-wide modernisation, Celebrity Millennium is making even bigger waves with phenomenal new staterooms, technologies, and design, transforming the way people open their world. Enjoy six complimentary dining venues, nine bars and lounges and a host of leisure facilities.

Your Cruise Features

- ▶ Classic Drinks package including alcohol
- ▶ Outside or Balcony cabins as standard
- ▶ All meals on board

ITINERARY

DAYS 1-2: FLY TO OSAKA

Fly overnight to the vibrant city of Osaka. On arrival at the airport, you will be met by an English-speaking guide and transferred to the hotel in Kyoto. Depending on your time of arrival the rest of the day is yours to start soaking up the local culture.

DAYS 3-4: EXPLORE KYOTO

Japan's capital for over 1,000 years, Kyoto is a treasure trove of history and timeless culture. Your explorations will include Kyoto's landmark sights - beautiful Kinkakuji (the Golden Pavilion), the Zen Garden of Ryoanji, the pathways of vermilion red torii gates at Fushimi Inari Shrine and the Gion district, an area famous for its geisha. Between explorations, enjoy dinner with a Maiko performance and sukiyaki lunch.

DAY 5: VIEW MOUNT FUJI

Board a bullet train and be whisked off to Mount Fuji. Take a mini cruise on the picturesque Lake Ashi. Fly up to the heights of Mount Komagatake by cable car for more beautiful views before heading to Nagano for your overnight stay.

DAY 6: SNOW MONKEYS

Travel to Jigokudani Monkey Park, walking through the forest to reach the hot spring pool where a community of Japanese macaques, or snow monkeys, bath in the warm waters. Transfer to Tokyo, Japan's capital since 1868 and one of the world's largest cities.

DAY 7: EXPLORE TOKYO

Tokyo may seem a thoroughly modern cityscape at first glance but look beyond the soaring towers and neon signs and you'll find deeply

rooted tradition and peaceful pockets of the past. Start at vibrant Sensoji, the city's oldest temple before ascending the Tokyo Skytree for magical views. Enjoy a sushi making masterclass before dining on your creations for lunch. Make a photo stop at the world-famous Shibuya Crossing then explore Meiji Jingu Shrine.

DAY 8: BOARD THE CELEBRITY MILLENNIUM

After breakfast you will be met by an English-speaking guide and transferred to Yokohama cruise terminal to board your cruise. The rest of the day is free to explore the ship's facilities and settle in. Throughout your cruise, when your ship comes into port, there will be a range of excursions available to help you explore each destination. These excursions are at your own expense and are bookable on your cruise reservation.

DAY 9: CRUISE - EXPLORE SHIMIZU

Port in Shimizu, a city of medieval castle ruins, ancient pine groves and traditional gardens. Here, you are ideally located for viewing Mount Fuji (weather dependant) and a series of fascinating cultural sights.

DAY 10: CRUISE - EXPLORE KYOTO

Arrive in Osaka, the closest port to Kyoto, Japan's cultural heart and discover more of this enchanting city.

DAY 11: CRUISE - KYOTO

Spend today at port, or enjoying your cruise ship's many amenities.

DAY 12: CRUISE - EXPLORE KOCHI

Port at Kochi. A surfer hang out with



a UNESCO Global Geopark coastline, plentiful great outdoors and bags of rustic charm, Kochi is a wonderful place to while away a day.

DAY 13: CRUISE - EXPLORE HIROSHIMA

Arrive at Hiroshima. Best known as the first city in the world to feel the power of the atomic bomb in 1945, Hiroshima has emerged from the ashes as a cosmopolitan and peaceful place. Visit the tranquil Peace Park to learn about and reflect on the past.

DAY 14: CRUISE - AT SEA

Relax onboard your way - sitting by the pool, enjoying the bars and restaurants or taking part in a sport or activity.

DAY 15: CRUISE - EXPLORE KAGOSHIMA

Arrive at Kagoshima, a city at the southern tip of the island of Kyushu. Watched over by the active Sakurajima volcano and rich in history and delicious food, and surrounded by glorious nature, there is plenty to discover here.

DAY 16: CRUISE - EXPLORE NAGASAKI

Port at Nagasaki. Like Hiroshima, Nagasaki is best known for the events of the 9th of August 1945 but there is so much more to it. Backed by rolling hills and forested islands, with unspoilt beaches, European-style architecture, and ancient roots, it is a delight to explore.

DAY 17: CRUISE - EXPLORE FUKUOKA

Port at Fukuoka, the alluring, and largest city, on Kyushu Island. The gateway to a mountainous interior that offers excellent hiking, and really, really good ramen to sample, the city itself has plenty of historic and cultural attractions to enjoy.

DAY 18: CRUISE - EXPLORE BUSAN

Depart Japan and arrive in South Korea, porting at the bustling city of Busan. Boasting mountains, beaches, and hot springs, this is a city full of small-town charm.

DAY 19: CRUISE - AT SEA

Savour your final day at sea and fill it with your favourite of your ship's activities and experiences.

DAY 20: ARRIVE IN SEOUL

Arrive at Seoul's cruise port and disembark the Celebrity Millennium. You will be met by an English-speaking guide and transferred to your hotel, where the rest of the day is at leisure.

DAY 21: EXPLORE SEOUL

Spend the day exploring the sights and sounds of Seoul. Start at Gwanghwamun Plaza, then pass through the Gwanghwamun, the largest gate of Gyeongbok Palace, to explore and see the historic changing of the guard ceremony. Then, don traditional attire to explore the Bukchon Hanok Village, with its beautifully restored heritage buildings. Later, learn more about one of South Korea's most famous exports, kimchi, with a cooking demonstration followed by a stroll through the trendy Myeongdong neighbourhood.

DAY 22: FLY SEOUL TO UK

Fly to the UK, arriving home the same or the following day.

CRUISE & TOUR

JAPAN, SOUTH KOREA

PHYSICAL RATING



IS THIS TOUR FOR YOU?

Covering the Japanese islands of Honshu and Kyushu, on this cruise & tour itinerary you'll get to explore Japan's history, culture and nature in a little more depth, with the added bonus of South Korea to end your Far East explorations.

PRICES & DEPARTURES

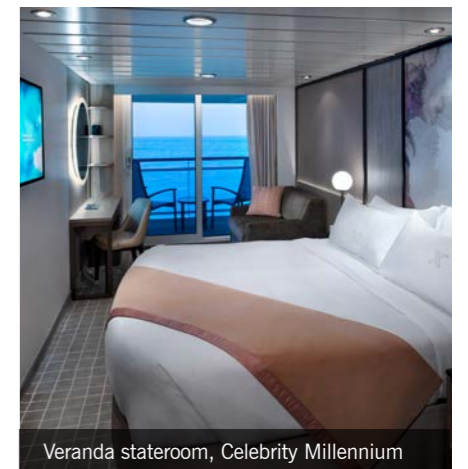
Departure days of the week vary

2026 DATES	Outside	Balcony
07 May - 28 May	£8,290	£8,590
16 Sep - 07 Oct	£8,290	£8,590

Flight and supplement information

- Based on London Heathrow departures
- Regional UK departures available
- Flight upgrades available on request
- Single room outside from £3,290
- Land only from £7,490
- Gratuities on cruise £165

Dates don't work? Call our Tailmade team who can book this itinerary as a private tour, with timings that suit you.



Veranda stateroom, Celebrity Millennium

▶ AUTHENTIC EXPERIENCES

- ▶ Distinguish your nori from your nigiri in a sushi making masterclass! With plenty of tricks and tips, you'll learn to roll the perfect makizushi and much more before dining on your creations for lunch.
- ▶ Meet the famous snow monkeys. Hidden away in a forested valley in the Japanese Alps, natural hot spring pools have become a home and playground for a community of adorable Japanese macaques.
- ▶ Kimchi is one of South Korea's most famous exports and this tangy side dish of fermented vegetables is renowned for its healthy properties. Learn how to make your own with a cooking demonstration from a seasoned professional in a traditional Korean house.

JAPAN BY LAND & SEA

CRUISE & TOUR

23 DAYS FROM

PER PERSON **£12,690**

FLIGHT INCLUSIVE FROM THE UK

ALL MEALS

14 NIGHT AZAMARA CRUISE

TOUR TICKLIST

- ✓ Cruise from Kobe to Tokyo
- ✓ Ascend Tokyo Skytree
- ✓ Visit the adorable snow monkeys
- ✓ Explore Kyoto's cultural treasures



CAPTION

PRICE INCLUDES

- 21 breakfasts, 20 lunches & 21 dinners
- International flights and current taxes
- Domestic transportation
- 4 star accommodation, plus Azamara Cruise
- Touring with guides and entrance fees



AZAMARA PURSUIT

An intimate and luxurious ship, Azamara Pursuit promises the ambiance of a boutique hotel at sea. Elegantly furnished, this contemporary small ship can access ports out of reach to larger ships and Azamara's destination focus means longer time in port and more overnight stays promising a more immersive experience.

Your Cruise Features

- ▶ All drinks including alcohol
- ▶ Gratuities
- ▶ Outside or balcony cabins as standard
- ▶ Self service laundry
- ▶ All meals on board

ITINERARY

DAYS 1-2: FLY OVERNIGHT TO TOKYO

Fly overnight to Japan's capital, and one of the world's largest cities, Tokyo. On arrival at the airport, you will be met by an English-speaking guide and transferred to the hotel. Depending on your time of arrival the rest of the day is yours to start soaking up the local culture.

DAY 3: EXPLORE TOKYO

Tokyo may seem a thoroughly modern cityscape at first glance but look beyond the soaring towers and neon signs and you'll find deeply rooted tradition and peaceful pockets of the past. Start at vibrant Sensoji, the city's oldest temple before ascending Tokyo Skytree for magical views. Enjoy a sushi making masterclass before dining on your creations for lunch. Make a photo stop at the world-famous Shibuya Crossing then explore Meiji Jingu Shrine.

DAY 4: SNOW MONKEYS

Travel to Jigokudani Monkey Park, walking through the forest to reach the hot spring pool where a community of Japanese macaques, or snow monkeys, bathe in the warm waters. Visit the 7th-century Zenkoji before transferring to Nagano, where you can try out the Japanese tradition of onsen – hot spring baths – and enjoy dinner at your ryokan accommodation.

DAY 5: MOUNT FUJI

Travel by road to Mount Fuji area. Pause at Oishi Park for incredible views (weather dependent) before a mini cruise on the picturesque Lake Ashi. Fly up to the heights of Mount Komagatake by cable car for more beautiful views. Board a bullet train and be whisked off to Kyoto!

DAYS 6-7: EXPLORE KYOTO

Japan's Capital for over 1,000 years, Kyoto is

a treasure trove of history and timeless culture. Your explorations will include Kyoto's landmark sites - beautiful Kinkakuji also known as the Golden Pavilion, Kiyomizu temple, the Zen garden of Ryoanji, the pathways of vermilion red torii gates at Fushimi Inari Shrine, Arashiyama Bamboo forest and Tagetsukyo Bridge. Enjoy a traditional Sukiyaki (hotpot) lunch and authentic sake tasting.

DAY 8: BOARD THE AZAMARA PURSUIT

After breakfast you will be met by an English-speaking guide and transferred to Kobe's cruise terminal to board your cruise. The rest of the day is free to explore the ship's facilities and settle in. Throughout your cruise, when your ship comes into port, there will be a range of excursions available to help you explore each destination. These excursions are at your own expense and are bookable on your cruise reservation.

DAY 9: CRUISE – KOBE

Spend the day ported in Kobe, the perfect opportunity to explore the amenities of your ship.

DAY 10: CRUISE – HIROSHIMA

Arrive at Hiroshima. Best known as the first city in the world to feel the power of the atomic bomb in 1945, Hiroshima has emerged from the ashes as a cosmopolitan and peaceful place. Visit the tranquil Peace Park to reflect on the past.

DAY 11: CRUISE – KITAKYUSHU

On the north coast of the island of Fukuoka, Kitakyushu is the gateway to plentiful natural beauty, historic sights, and some wonderful local food.

DAY 12: CRUISE – NAGASAKI

Head back to Japan, porting at Nagasaki. Like



Hiroshima, Nagasaki is best known for the events of the 9th of August 1945 but there is so much more to it. Backed by rolling hills and forested islands, with unspoilt beaches, European-style architecture, and ancient roots, it is a delight to explore.

DAY 13: CRUISE – BUSAN

Arrive in South Korea! Port in the bustling Busan, a city that boasts mountains, beaches, and hot springs and is full of small-town charm.

DAY 14: CRUISE – SAKAIMINATO

Back in Japan, port at Sakaiminato. This small fishing town is the birthplace of anime legend Shigeru Mizuki, so is a pilgrimage site for manga lovers, as well as being surrounded by spectacular nature.

DAY 15: CRUISE – KANAZAWA

Arrive in the historic town of Kanazawa, where you can get a flavour of old-world Japan exploring classical architecture and traditional Japanese gardens, including Kenrokuen, one of the Three Great Gardens of Japan.



Watch Japanese macaques

DAY 16: CRUISE – NIIGATA

One the shores of the Sea of Japan, Niigata is a city of ancient traditions, best known for rice and sake.

DAY 17: CRUISE – AKITA

Surrounded by mountains, forests and plentiful hot springs, Akita also offers a glimpse at the samurai way of life in historic Kakanodate.

DAY 18: CRUISE – AOMORI

A delightfully sleepy seaside resort surrounded by mountainous landscapes, Aomori is a charming city to explore.

DAY 19: CRUISE – HAKODATE

Today you can visit the historic city of Hakodate, famous for its star-shaped fort. Soar up to the observation deck by gondola or wander the streets to browse the market or taste a kaisen-don, a seafood rice bowl.

DAY 20: CRUISE – AT SEA

Fill your final days onboard your cruise with all of your favourite onboard activities.

DAY 21: CRUISE – TOKYO

Arrive in Yokohama. Today you are free to enjoy a final day on the cruise ship, or head out to explore Tokyo or the surrounding area on an excursion.

DAY 22: ARRIVE IN TOKYO

Disembark the Azamara Pursuit, where you will be met by an English-speaking guide and transferred to your hotel in Tokyo.

DAY 23: FLY TOKYO TO UK

Fly to the UK, arriving home the same or the following day.

CRUISE & TOUR

JAPAN, SOUTH KOREA

PHYSICAL RATING



IS THIS TOUR FOR YOU?

Explore the highlights of Japan – Tokyo, Mount Fuji and Kyoto – on a culture-packed tour before circumnavigating Japan's largest island, Honshu, onboard the Azamara Pursuit, discovering even more wonders as you go.

PRICES & DEPARTURES

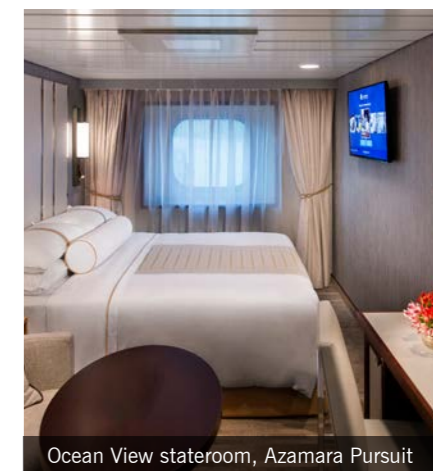
Departing Friday returning Saturday

2026 DATES	Outside	Balcony
3-Apr - 25 Apr	£12,690	£14,790

Flight and supplement information

- Based on London Heathrow departures
- Regional UK departures available
- Flight upgrades available on request
- Single room outside from £8,190
- Land only from £11,790
- Gratuities on cruise included

Call us to register your interest for further departures of this tour.



Ocean View stateroom, Azamara Pursuit

▶ AUTHENTIC EXPERIENCES

- ▶ Distinguish your nori from your nigiri in a sushi making masterclass! With plenty of tricks and tips, you'll learn to roll the perfect makizushi and much more before dining on your creations for lunch.
- ▶ A huge part of Japanese culture, onsen bathing is used for relaxation, healing and both literal and metaphorical cleansing. Soaking in the geothermic waters, lauded for their medicinal qualities, is the perfect way to end a day of exploring.
- ▶ Meet the famous snow monkeys. Hidden away in a forested valley in the Japanese Alps, natural hot spring pools have become a home and playground for a community of adorable Japanese macaques.

NEW

SINGAPORE TO KYOTO

CRUISE & TOUR

25 DAYS FROM

PER PERSON **£8,790**

FLIGHT INCLUSIVE FROM THE UK

ALL MEALS

15 NIGHT CELEBRITY CRUISE

TOUR TICKLIST

- ✓ Explore vibrant Singapore
- ✓ Cruise Singapore - Tokyo
- ✓ See iconic Mount Fuji
- ✓ Meet the snow monkeys
- ✓ Discover timeless Kyoto



Visit the snow monkeys of the Japanese Alps

PRICE INCLUDES

- 23 breakfast, 22 lunches & 23 dinners
- International flights and current taxes
- Domestic transportation
- 4 star accommodation, plus Celebrity Cruise
- Touring with guides and entrance fees
- Visa fees for UK passport holders



CELEBRITY MILLENNIUM

As part of a \$500 million fleet-wide modernization, Celebrity Millennium is making even bigger waves with phenomenal new staterooms, technologies, and design, transforming the way people open their world. Enjoy six complimentary dining venues, nine bars and lounges and a host of leisure facilities.

Your Cruise Features

- ▶ Classic drinks package including alcohol
- ▶ Outside or balcony cabins as standard
- ▶ All meals on board

ITINERARY

DAYS 1-2: ARRIVE IN SINGAPORE

Fly overnight to the vibrant city of Singapore. On arrival at the airport, you will be met and transferred to your hotel. Depending on your time of arrival the rest of the day is yours to start soaking up the local culture.

DAY 3: EXPLORE SINGAPORE

Embark a full day tour of Singapore. Begin in the historic neighbourhoods of Chinatown and Kampong Glam, where you can soak up local culture and learn about the art of 'teh tarik' (tea pulling). Arrive at the Fullerton Hotel via a hidden walkway for a delicious High Tea. Cruise the Singapore River as the sun sets then, post dinner, explore the magnificent Gardens by the Bay and enjoy its iconic light show.

DAY 4: BOARD THE CELEBRITY MILLENNIUM

After breakfast you will be transferred to Singapore's cruise terminal to board your cruise. The rest of the day is free to explore the ship's facilities and settle in. Throughout your cruise, when your ship comes into port, there will be a range of excursions available to help you explore each destination. These excursions are at your own expense and are bookable on your cruise reservation.

DAY 5: CRUISE - AT SEA

Spend your first day onboard exploring all the facilities that your cruise ship has on offer.

DAY 6: CRUISE - SAIGON

Arrive in Phu My port for Saigon, Vietnam's powerhouse city. Here there is so much fascinating history and culture to discover on its bustling streets or you could consider exploring the natural beauty of the Mekong Delta.

DAY 7: CRUISE - AT SEA

Make the most of your cruise ship facilities today - you could relax by the pool, try out the restaurants and bars, and enjoy the range of activities and shows.

DAY 8: CRUISE - HUE/DANANG

Dock at Chan May port on Vietnam's central coast. From here you can access the imperial history of Hue, the beaches of Danang, or the charming, cobbled streets of Hoi An.

DAY 9: CRUISE - AT SEA

Relax onboard your way - sitting by the pool, enjoying the bars and restaurants, or taking part in a sport of activity.

DAYS 10-11: CRUISE - HONG KONG

Arrive in Hong Kong. Spend the day exploring under the iconic skyline of one of Asia's most cosmopolitan cities, where modern and traditional meet on bustling streets.

DAY 12: CRUISE - AT SEA

There is plenty to keep you entertained onboard the Celebrity Millennium, whether its relaxing in your cabin, finding the perfect spot for a drink with a view, or something more active.

DAY 13: CRUISE - TAIPEI

Pause at the port of Keelung for Taiwan's capital, Taipei. A modern city full of a timeless culture discover the blend of Chinese, Japanese, Southeast Asian and Western influences as you explore.

DAY 14: CRUISE - AT SEA

Continuing exploring the many things to do and see onboard the Celebrity Millennium.

DAY 15: CRUISE - NAGASAKI

Nagasaki is best known for the events of the 9th



of August 1945 but there is so much more to it. Backed by rolling hills and forested islands, with unspoilt beaches, European-style architecture, and ancient roots, it is a delight to explore.

DAY 16: CRUISE - AT SEA

Spend the day however you wish as your cruise continues.

DAY 17: CRUISE - MOUNT FUJI

Port at Shimizu, a city of medieval castle ruins, ancient pine groves and traditional gardens. Here, you are ideally located for viewing Mount Fuji.

DAY 18: CRUISE - TOKYO

Arrive at Yokohama cruise port, the gateway to the greater Tokyo area. Japan's cutting-edge capital city, Tokyo is a fascinating city of contrasts. Begin exploring the city today or use the time to make the most of the ship's facilities.

DAY 19: DISEMBARK THE CELEBRITY MILLENNIUM

Bid farewell to the Celebrity Millennium. Met by a guide, you will be transferred to your hotel in Tokyo. The rest of the day is yours to relax or explore.

DAY 20: EXPLORE TOKYO

Embark on a full day exploration of Tokyo, start at vibrant Sensoji, the city's oldest temple before taking a stroll down Nakamise Shopping Street to browse the souvenirs and locals snack foods. Then, ascend the Tokyo Skytree for panoramic views over the city. Enjoy a sushi making masterclass and dine on your creations for lunch. Later, wander through the Imperial Palace Gardens then explore Meiji Jingu Shrine, a Shinto shrine dedicated to Emperor Meiji. Dinner tonight will be at a local restaurant.

DAY 21: TRAVEL TO NAGANO

Travel to Lake Ashi for a picturesque cruise, before soaring high on the Komagatake Ropeway to a spectacular viewpoint with views of Mount Fuji (weather dependent). Arrive at your traditional ryokan accommodation in Nagano, where you can enjoy the onsen facilities this evening.

DAY 22: SNOW MONKEYS

Transfer to Jigokudani Monkey Park, home to the famous hot spring bathing Japanese macaques, also known as snow monkeys. Board a bullet train to Kyoto, a city that is the very essence of ancient Japan.

DAY 23: EXPLORE KYOTO

Embark on a tour of the city including visits to Kinkakuji, the 'Golden Pavilion', set in exquisitely landscaped gardens and the temple of Ryoanji with its famous Zen garden. In the afternoon, wander through the serene Arashiyama Bamboo Forest and admire the old Togetsukyo Bridge.

DAY 24: MORE KYOTO

Soak up more of Kyoto's rich history with a wander through the beautiful Kiyomizu temple complex. Lunch will be a traditional sukiyaki (hotpot) before an exploration of sake plus a tasting at the Matsui Shuzou Museum. Then, climb the forested slopes of Fushimi Inari Shrine, passing through the many vermilion red torii gates.

DAY 25: FLY KYOTO TO UK

Fly to the UK, arriving home the same or the following day.

SINGAPORE TO KYOTO

CRUISE & TOUR

SINGAPORE, VIETNAM, HONG KONG, TAIWAN, JAPAN

PHYSICAL RATING



IS THIS TOUR FOR YOU?

Soak up the delights and see the sights of Singapore before cruising eastwards to discover the enchantments of Japan. With stops in Vietnam, Taiwan and Hong Kong, on arrival in Japan you'll get the see some of its best bits, including time to delve into the timeless history of Kyoto.

PRICES & DEPARTURES

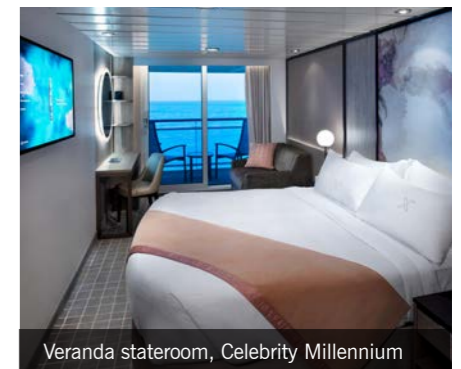
Departing Thursday returning Saturday

2027 DATES	Outside	Balcony
12 Feb - 08 Mar	£9,890	£11,290

Flight and supplement information

- Based on London Heathrow departures
- Regional UK departures available
- Flight upgrades available on request
- Single room outside from £3,890
- Land only from £9,090
- Tipping paid locally 15 SGD (Singapore)
- Gratuities on cruise £206

Call us to register your interest for further departures of this tour.



Veranda stateroom, Celebrity Millennium

▶ AUTHENTIC EXPERIENCES

- ▶ Head into the Kampong Glam neighbourhood where you'll be shown the art of 'pulling' tea to make 'teh tarik', a popular breakfast beverage. Strongly brewed black tea is poured back and forth between containers an impressive arm's length apart to cool it, before it is served with condensed milk.
- ▶ Sake is much more than Japan's national drink, it's an essential part of the country's customs, traditions, and celebrations. Learn all about the strict customs that dictate how sake is produced and how it is drunk before tasting this world-famous rice wine for yourself.
- ▶ Comfortable, reliable, efficient, punctual and fast, Japan's extensive rail network is world renowned, so what better way to explore? Riding a bullet train, known as shinkansen locally, is an essential Japan experience, whizzing up to 320 kilometres an hour to get you from city to city.

NEW

JAPAN & SOUTH KOREA EXPLORED

CRUISE & TOUR

22 DAYS FROM

PER PERSON **£9,590**

FLIGHT INCLUSIVE FROM THE UK

ALL MEALS

9 NIGHT NORWEGIAN CRUISE

TOUR TICKLIST

- ✓ Discover timeless Kyoto
- ✓ Explore rural Japan
- ✓ Meet the snow monkeys
- ✓ Cruise Tokyo to Seoul



Visit Tokyo's Senso-ji Temple

PRICE INCLUDES

- 20 breakfasts, 19 lunches & 20 dinners
- International flights and current taxes
- Domestic transportation
- 4 star accommodation, plus NCL Cruise
- Touring with guides and entrance fees



NORWEGIAN JADE

Onboard the Norwegian Jade, every moment is unforgettable! From vibrant entertainment to the wide range of delicious complimentary and speciality restaurants, there is so much to explore. Relax in a hot tub, the spa and by the pool, watch a show, or live it up in the casino or at a unique bar or lounge. You can always find a moment of calm in your comfortable, refurbished stateroom before heading out to do it all over again.

Your Cruise Features

- ▶ NCL's 'More at Sea Package', with enhanced beverages including premium spirits, upgraded speciality dining options and more!
- ▶ Access to the Mandara Spa and four outdoor hot tubs to relax in.
- ▶ Range of shows, classes, lecture and trivia activities to get involved in.

ITINERARY

DAYS 1-2: ARRIVE IN OSAKA

Fly overnight to the lively, fast-paced city of Osaka. On arrival, you will be transferred to your hotel in Kyoto, where the rest of the day is yours to relax or begin exploring.

DAY 3: EXPLORE KYOTO

Spend the day discovering the treasures of the timeless city of Kyoto, Japan's ancient capital. You'll begin at the enchanting Kinkaku-ji, also known as the 'Golden Pavilion', before contemplating the famous Zen Garden at Ryoan-ji. Later, explore the serene Arashiyama Bamboo Forest and Tagetsukyo Bridge.

DAY 4: MORE KYOTO

Soak up more of Kyoto's rich history with a wander through the beautiful Kiyomizu temple complex. Lunch will be a traditional sukiyaki (hotpot) before an exploration of sake plus a tasting at the Matsui Shuzou Museum. Then, climb the forested slopes of Fushimi Inari Shrine, passing through the many vermilion red torii gates.

DAY 5: BULLET TRAIN TO KANAZAWA

All aboard one of Japan's renowned shinkansen (bullet trains) to Kanazawa. Stroll through the traditional Higashi Chaya district to see the historic architecture then learn the art of making gold leaf. Finally, learn about samurai life at the Nomura Samurai Residence.

DAY 6: TRAVEL TO TAKAYAMA

This morning, savour the beauty of Kenrokuen, one of the Three Great Gardens of Japan, and admire the artworks at the 21st Century Museum of Contemporary Art. Then travel to

Takayama. End the day enjoying the exhibits of the Festival Floats Exhibition Hall and the Kusakabe Folk Museum and strolling down Kamisannomachi Street.

DAY 7: EXPLORE TAKAYAMA

Walk through Takayama market, visit Takayama Jinya, and stroll the streets of the old town, lined with traditional dwellings. Explore the Hida Folk Village, an open-air museum that showcases traditional houses of the region. Travel to Nagano and check into your traditional ryokan accommodation where you can try an onsen and dine on a kaiseki dinner.

DAY 8: MEET THE SNOW MONKEYS

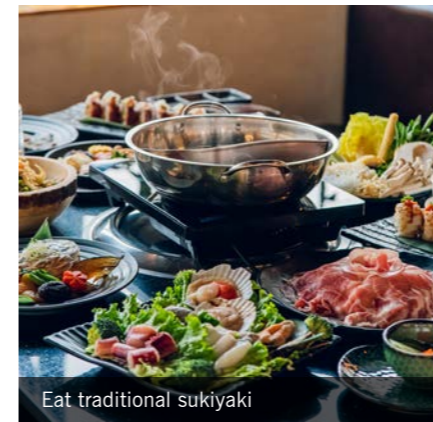
Transfer to Jigokudani Monkey Park, home to the famous, hot spring bathing Japanese macaques, also known as snow monkeys. Travel on to Tokyo, Japan's dazzling capital city.

DAY 9: EXPLORE TOKYO

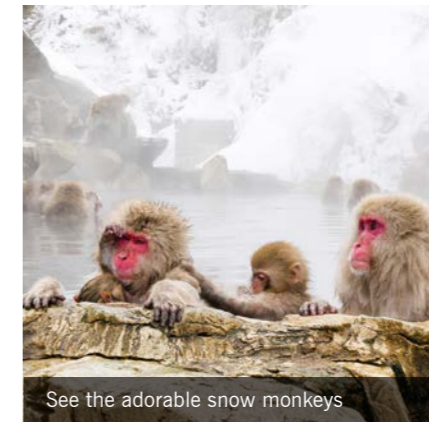
Spend the day discovering Tokyo. Visit Senso-ji, Tokyo's oldest Buddhist Temple and ascend the Tokyo Skytree for panoramic views over the city. Lunch today is extra special, as you'll be making your own! Enjoy a sushi making class before dining on your creations. This afternoon, see the Imperial Palace and Meiji Jingu Shrine, walk along Takeshita Street to taste local treats and stop at the famous Shibuya Crossing.

DAY 10: VISIT NIKKO

Travel to Nikko, a compact and culture-filled city. With some of Japan's most beautiful temples and shrines, and a spectacular mountainous setting on the edge of the Nikko National Park, it is a delight to explore.



Eat traditional sukiyaki



See the adorable snow monkeys

DAY 11: BOARD THE NORWEGIAN JADE

After breakfast you will be transferred to Tokyo's cruise terminal to board your cruise. The rest of the day is free to explore the ship's facilities and settle in. Throughout your cruise, when your ship comes into port, there will be a range of excursions available to help you explore each destination. These excursions are at your own expense and are bookable on your cruise reservation.

DAY 12: CRUISE - MOUNT FUJI

Port at Shimizu, a city of medieval castle ruins, ancient pine groves and traditional gardens. Here, you are ideally located for viewing Mount Fuji or exploring the series of fascinating cultural sights around its base.

DAY 13: CRUISE - NAGOYA

Built around its magnificent castle, Nagoya has fascinating museums around manufacturing and technology, to discover.

DAY 14: CRUISE - OSAKA/ KYOTO

Spend another day exploring this historic city or soak up the buzz of Osaka.

DAY 15: CRUISE - KOCHI

A surfer hang out with a UNESCO Global Geopark coastline, plentiful great outdoors and a magnificent 400-year-old castle, Kochi is a wonderful place to while away a day.

DAY 16: CRUISE - HIROSHIMA

Arrive at Hiroshima. The first city in the world to feel the power of the atomic bomb in 1945, Hiroshima has emerged for the ashes as a cosmopolitan and peaceful place.

DAY 17: CRUISE - KAGOSHIMA

Arrive at Kagoshima, a city at the southern tip of the island of Kyushu. Watched over by the active Sakurajima volcano and rich in history and delicious food, and surrounded by glorious nature, there is plenty to discover here.

DAY 18: CRUISE - NAGASAKI

Nagasaki is best known for the events of the 9th of August 1945 but there is so much more to it. Explore its rolling hills and forested islands with unspoilt beaches and European-style architecture.

DAY 19: CRUISE - JEJU ISLAND

Welcome to South Korea! Port at Jeju Island, South Korea's favourite holiday spot. A volcanic island of rugged peaks, lush forest and white sand beaches, it is an excellent place to explore a wealth of unique ancient traditions.

DAY 20: ARRIVE IN SEOUL

Bid farewell to the Norwegian Jade. Met by a guide, you will be transferred to your hotel in Seoul where the rest of the day is at leisure.

DAY 21: EXPLORE SEOUL

Spend the day seeing the sights of Seoul, starting at Gwanghwamun Square and passing through the magnificent gate of Gyeongbok Palace complex to watch the Changing of the Guards ceremony. You'll then change into traditional Korean clothes to explore the traditional Bukchon Hanok Village. Take part in a kimchi making demonstration, then explore Myeongdong, an area renowned for its fashion boutiques and street food stalls.

DAY 22: FLY SEOUL TO UK.

Fly to the UK, arriving home the same or the following day.

JAPAN & SOUTH KOREA EXPLORED

CRUISE & TOUR

JAPAN, SOUTH KOREA

PHYSICAL RATING



IS THIS TOUR FOR YOU?

Journey through the rich culture of Japan across the Korea Strait to the wonders of South Korea on one magical journey. Explore Japan's top sights, before cruising around Honshu – Japan's largest island – and across to South Korea's capital Seoul, pausing at Jeju Island en route.

PRICES & DEPARTURES

Departure days of the week vary

2026 DATES	Outside	Balcony
2 Nov - 23 Nov	£9,590	£10,590
2027 DATES	Outside	Balcony
23 Feb - 16 Mar	£9,590	£11,490
14 Mar - 03 Apr	£10,290	

Flight and supplement information

- Based on London Heathrow departures
- Regional UK departures available
- Flight upgrades available on request
- Single room outside from £3,290 balcony from £4,290
- Land only from £8,890
- Gratuities on cruise £140

Call us to register your interest for further departures of this tour.



Visit Hanok Village, Seoul

▶ AUTHENTIC EXPERIENCES

- ▶ Sake is much more than Japan's national drink, it's an essential part of the country's customs, traditions, and celebrations. Learn all about the strict customs that dictate how sake is produced and how it is drunk before tasting this world-famous rice wine for yourself.
- ▶ True sushi is an artform, a foodie reflection of the cultural values of respect for nature, craftsmanship, and community. Supervised by a sushi chef, take part in a sushi making class in Tokyo picking up basic sushi skills before sitting down with your fellow travellers to dine on the results.
- ▶ Meet the famous snow monkeys. Hidden away in a forested valley in the Japanese Alps, natural hot spring pools have become a home and playground for a community of adorable Japanese macaques.

NEW

JAPAN BY RAIL & SEA

CRUISE & TOUR

22 DAYS FROM

PER PERSON **£10,590**

FLIGHT INCLUSIVE FROM THE UK

ALL MEALS

12 NIGHT CELEBRITY CRUISE

TOUR TICKLIST

- ✓ Be immersed in timeless Kyoto
- ✓ Wander the magical Korakuen
- ✓ Explore Tokyo's best bits
- ✓ Cruise Tokyo to Tokyo



Wander the enchanting old streets of Kyoto

PRICE INCLUDES

- 20 breakfasts, 19 lunches & 20 dinners
- International flights and current taxes
- Domestic transportation
- 4 star accommodation, plus Celebrity Cruise
- Touring with guides and entrance fees
- Visa fees for UK passport holders



CELEBRITY MILLENNIUM

As part of a \$500 million fleet-wide modernisation, Celebrity Millennium is making even bigger waves with phenomenal new staterooms, technologies, and design, transforming the way people open their world. Enjoy six complimentary dining venues, nine bars and lounges and a host of leisure facilities.

Your Cruise Features

- ▶ All drinks including alcohol
- ▶ Outside cabins as standard
- ▶ All meals on board

ITINERARY

DAYS 1-2: ARRIVE IN OSAKA

Fly overnight to the lively, fast-paced city of Osaka. On arrival, you will be transferred to your hotel in Kyoto, where the rest of the day is yours to relax or begin exploring.

DAY 3: EXPLORE KYOTO

Spend the day discovering the treasures of the timeless city of Kyoto, Japan's ancient capital. You'll begin at the enchanting Kinkaku-ji, also known as the 'Golden Pavilion', before contemplating the famous Zen Garden at Ryoanji. Later, explore the Arashiyama Bamboo Forest and Tagetsukyo Bridge.

DAY 4: BULLET TRAIN TO HIROSHIMA

Climb the forested slopes of Fushimi Inari Shrine, passing through the many vermilion red torii gates. Transfer to Kyoto's station for a quintessential Japanese experience – a ride on a bullet train, that will whisk you off to Hiroshima. This afternoon, you'll visit the Hiroshima Peace Memorial Park and the Atomic Bomb Dome.

DAY 5: VISIT MIYAJIMA ISLAND

Board a ferry for a short cruise across the Seto Inland Sea to Miyajima Island to visit its famous shrine, Itsukushima. There will also be some free time to browse the little shops of Miyajima Omotesando.

DAY 6: EXPLORE OKAYAMA

Hop on a bullet train bound for Okayama where you'll spend the day exploring. Visit the lovely Kibitsu Shrine, Okayama Castle and Korakuen, one of Japan's Three Great Gardens, to walk through the picturesque traditional landscaping. Back on a bullet train, travel to the city of Nagoya.

DAY 7: EXPLORE NAGOYA

Begin the day at Nagoya Castle, then stroll through the tranquil Tokugawa Garden. Walk along the vibrant Osu Shopping Street with its shops and street food stalls and discover Noritake Garden, on the site of a former porcelain factory. Later, board a bullet train to Tokyo.

DAY 8: DISCOVER TOKYO

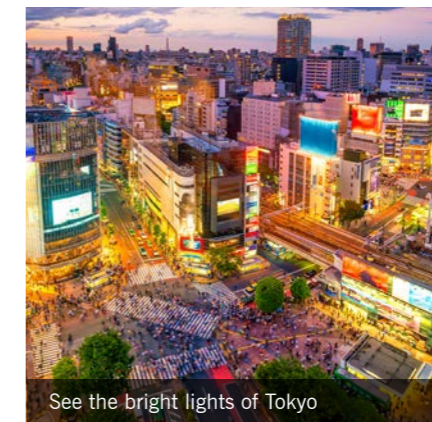
Spend the day exploring Japan's dazzling capital city. First, you'll visit Senso-ji, Tokyo's oldest Buddhist Temple, and walk down Nakamise Shopping Street browsing the souvenirs and delicious local snacks. Then ascend the Tokyo Skytree for panoramic views over the city. Lunch today is extra special, as you'll be making your own! Enjoy a sushi making class before dining on your creations. This afternoon, see the Imperial Palace and Meiji Jingu Shrine, walk along Takeshita Street to taste some local treats and see the famous Shibuya Crossing.

DAY 9: BOARD THE CELEBRITY MILLENNIUM

After breakfast you will be transferred to Yokohama cruise terminal to board your cruise. The rest of the day is free to explore the ship's facilities and settle in. Throughout your cruise, when your ship comes into port, there will be a range of excursions available to help you explore each destination. These excursions are at your own expense and are bookable on your cruise reservation.



Gaze on magnificent Mount Fuji



See the bright lights of Tokyo

DAY 10: CRUISE – AT SEA

Spend the day getting to know the Celebrity Millennium and all the plentiful ways you can be active or relax onboard.

DAY 11: CRUISE – EXPLORE KYOTO

Arrive in Osaka, the closest port to Kyoto. Spend the day exploring among ancient architecture, soaking up a rich, age-old culture or sampling some of the city's culinary delights.

DAY 12: CRUISE – KYOTO

Spend a second day at port in Osaka, making the most of the excellent range of facilities onboard your cruise ship or continuing your explorations of Kyoto.

DAY 13: CRUISE – EXPLORE KOCHI

Port at Kochi. A surfer hangout with a UNESCO Global Geopark coastline, plentiful great outdoors and bags of rustic charm, Kochi is a wonderful place to while away a day.

DAY 14: CRUISE – AT SEA

Relax onboard your way – sitting by the pool, enjoying the bars and restaurants, or taking part in a sport or activity.

DAY 15: CRUISE – EXPLORE BUSAN

Hello, South Korea! Port at the bustling city of Busan. Boasting mountains, beaches, and hot springs, this is a city full of small-town charm.

DAY 16: CRUISE – EXPLORE NAGASAKI

Back in Japan, port at Nagasaki, a city best known for the events of the 9th of August 1945. Backed by rolling hills and forested islands, with unspoilt beaches, European-style architecture, and ancient roots, it is a delight to explore.

DAY 17: CRUISE – EXPLORE KAGOSHIMA

Arrive at Kagoshima, a city at the southern tip of the island of Kyushu. Watched over by the active Sakurajima volcano and rich in history and delicious food, and surrounded by glorious nature, there is plenty to discover here.

DAY 18: CRUISE – AT SEA

Make the most of your cruise ship facilities today – you could relax by the pool, try out the restaurants and bars, and enjoy the range of activities and shows.

DAY 19: CRUISE – EXPLORE SHIMIZU

Port at Shimizu, a city of medieval castle ruins, ancient pine groves and traditional gardens. Here, you are ideally located for viewing Mount Fuji (weather dependent) or exploring the series of fascinating cultural sights around its base.

DAY 20: CRUISE – EXPLORE TOKYO

Arrive back in Yokohama. Today you are free to enjoy a final day on the cruise ship, or head out to explore Tokyo or the surrounding area on an excursion.

DAY 21: DISEMBARK THE CELEBRITY MILLENNIUM

Bid farewell to the Celebrity Millennium. Met by a guide, you will be transferred to your hotel in Tokyo, where the rest of the day will be at leisure before dinner at a local restaurant.

DAY 22: FLY TOKYO TO UK

Fly to the UK, arriving home the same or the following day.

JAPAN BY RAIL & SEA

CRUISE & TOUR

JAPAN, SOUTH KOREA

PHYSICAL RATING



IS THIS TOUR FOR YOU?

Experience the incredible sights and rich culture of Japan on this exploration of the archipelago by rail and by sea. Zip between sights and cities on the renowned shinkansen before boarding your cruise ship to explore Japan further.

PRICES & DEPARTURES

Departure days of the week vary

2027 DATES	Outside
18 Mar - 08 Apr	£10,590
30 Mar - 20 Apr	£11,100

Flight and supplement information

- Based on London Heathrow departures
- Regional UK departures available
- Flight upgrades available on request
- Single room outside from £4,290
- Land only from £9,690
- Gratuities on cruise £165

Call us to register your interest for further departures of this tour.



Oceanview Cafe, Celebrity Millennium

▶ AUTHENTIC EXPERIENCES

- ▶ True sushi is an artform, a foodie reflection of the cultural values of respect for nature, craftsmanship, and community. Supervised by a sushi chef, take part in a sushi making class in Tokyo picking up basic sushi skills before sitting down with your fellow travellers to dine on the results.
- ▶ Miyajima, a small island off Hiroshima, is a delightful place to visit. Besides the atmospheric shrine and its photogenic torii gate that seemingly floats at high tide, there is a quirky shopping street that is fun to browse and friendly sika deer that would love to share your food.
- ▶ Comfortable, reliable, efficient, punctual and fast, Japan's extensive rail network is world renowned, so what better way to explore? Riding a bullet train, known as shinkansen locally, is an essential Japan experience, whizzing up to 320 kilometres an hour to get you from city to city.

Discover Southeast Asia with Wendy Wu Tours

Southeast Asia is a dream destination for many travellers. With captivating scenery, tranquil temples and sensational food, it's easy to see why. Uncover countless cultures, beautiful landscapes and fascinating history in this most enchanting region.

WENDY'S TOP 6 SOUTHEAST ASIA EXPERIENCES

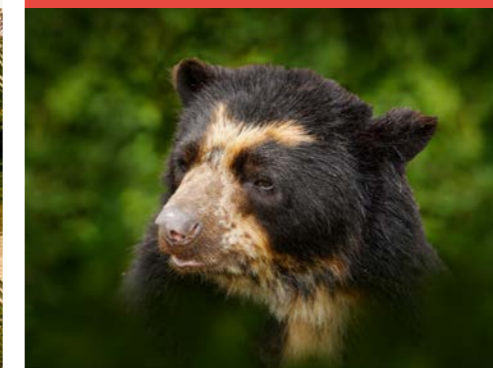
1 KINABATANGAN RIVER CRUISE

The Kinabatangan River offers some of Southeast Asia's best wildlife viewing. Float down its tranquil waters as the sun sets, keeping an eye on the jungle-filled riverbanks for a chance to spot hornbills, pygmy elephants, proboscis monkeys and much more.



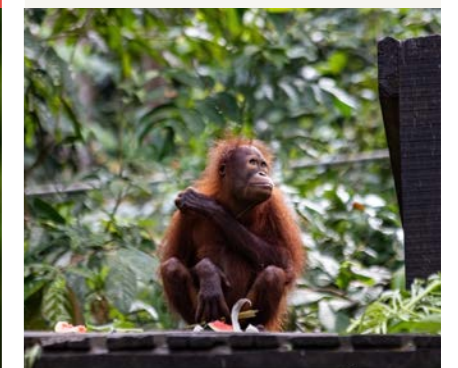
2 BORNEAN SUN BEAR CONSERVATION CENTRE

Just across the road from Sepilok, the Sun Bear Conservation Centre is a rescue and rehabilitation facility for the world's smallest bear. Watch from walkways and viewing platforms as the bears forage for food, climb trees and lounge in the sun, all training for their eventual release back into the wild.



3 SEPILOK

Sepilok Orangutan Rehabilitation Centre is home to a number of former captive and orphaned orangutans, that are in the process of being rehabilitated. You may encounter them roaming freely through the reserve's lush forest or at the morning and afternoon feedings, while babies and adolescents can be seen in the outdoor nursery.



4 KINABALU PARK

At the foot of Mount Kinabalu, Borneo's highest mountain, you'll find the lush landscapes of Kinabalu Park, Malaysia's first UNESCO World Heritage Site. Crisscrossed with forest trails, the park gives easy access to some of the island's unique flora and fauna and has a thrilling canopy walkway that will take you high into the treetops.



5 DISCOVER SECRET SINGAPORE

Discover a little of Singapore's secret history in the form of the GPO Tunnel, once used for running mail to waiting ships. You can follow it from Merlion Park under Fullerton Road and into what was the colonial General Post Office, now the five-star Fullerton Hotel. Make your way to The Courtyard where a delicious afternoon tea will be waiting in elegant, nostalgia-filled surroundings.



6 PULLING TEA

Discover the fascinating art of 'pulling tea' in the Kampong Glam district of Singapore. A popular breakfast beverage, 'teh tarik' is made by pouring strongly brewed black tea back and forth between containers from an impressive arm's length apart, to cool it down and froth it up, before it is served with condensed milk.



NEW

BORNEO & BEYOND

CRUISE & TOUR

26 DAYS FROM

PER PERSON **£8,690**

FLIGHT INCLUSIVE FROM THE UK

ALL MEALS

13 NIGHT NORWEGIAN CRUISE

TOUR TICKLIST

- ✓ Stroll cosmopolitan Hong Kong
- ✓ 13 night NCL cruise
- ✓ Discover Singapore's historic neighbourhoods
- ✓ Visit orangutans in Sepilok
- ✓ Explore Kinabalu National Park



Visit the orangutans being rehabilitated at Sepilok

PRICE INCLUDES

- 24 breakfasts, 23 lunches & 24 dinners
- International flights and current taxes
- Domestic transportation
- 3-4 star accommodation, plus NCL Cruise
- Touring with guides and entrance fees
- Visa fees for UK passport holders



NORWEGIAN JADE

Onboard the Norwegian Jade, every moment is unforgettable! From vibrant entertainment to the wide range of delicious complimentary and speciality restaurants, there is so much to explore. Relax in a hot tub, the spa and by the pool, watch a show, or live it up in the casino or at a unique bar or lounge. You can always find a moment of calm in your comfortable, refurbished stateroom before heading out to do it all over again.

Your Cruise Features

- ▶ NCL's 'More at Sea Package', with enhanced beverages including premium spirits, upgraded speciality dining options and more!
- ▶ Access to the Mandara Spa and four outdoor hot tubs to relax in.
- ▶ Range of classes, lectures, shows and trivia activities to get involved in.

ITINERARY

DAY 1-2: ARRIVE IN KOTA KINABALU

Fly overnight to Kota Kinabalu, Borneo. On arrival at the airport, you will be met and transferred to your hotel. Depending on your time of arrival the rest of the day is yours to start soaking up the local culture.

DAY 3: EXPLORE KOTA KINABALU

Spend the morning exploring the city, visiting the Yayasan Sabah (Sabah Foundation) building, the Sabah State Museum, and seeing some of the city's beautiful architecture, including the Blue Mosque and Chinese Temple.

DAY 4: VISIT KINABALU NATIONAL PARK

Head out of the city stopping at Nabal village to taste some fruit and browse local handicrafts. Enjoy a soak at the Poring hot springs, then enter the wilds of Kinabalu National Park to discover the flora and fauna that lives at the foot of Mount Kinabalu.

DAY 5: ORANGUTANS & SUN BEARS

Fly to the city of Sandakan. Head to Sepilok Orangutan Sanctuary to visit rescued orangutans being prepared to go back into the wild before crossing to the Bornean Sun Bear Conservation Centre. This afternoon, cruise up the Kinabatangan River, spotting wildlife on the river's gloriously biodiverse banks.

DAY 6: CRUISE THE KINABATANGAN

Spend the day on and around Pitas Lake and the Kinabatangan River. If you're lucky you may spot wildlife like pygmy elephants and hornbills along its banks.

DAY 7: EXPLORE SUKAU

Cruise peacefully across the waters of Oxbow Lake at dawn in search of more wonderful wildlife.

After lunch, explore the magnificent Gomantong Caves, home to millions of bats and swiftlets.

DAY 8: RETURN TO KOTA KINABALU

Enjoy your final immersion in the sights and sounds of the jungle. Return to Sandakan airport to fly back to Kota Kinabalu.

DAY 9: FLY TO SINGAPORE

Fly to Singapore. On arrival at the airport, you'll be transferred to your hotel where the rest of the day is yours to relax or explore.

DAY 10: EXPLORE SINGAPORE

Embark a full day tour of Singapore. Begin in the historic neighbourhoods of Chinatown and Kampong Glam, where you can learn about the art of 'teh tarik' (tea pulling). Arrive at the Fullerton Hotel via a hidden walkway for a delicious High Tea. Cruise the Singapore River as the sun sets then, post dinner, explore the magnificent Gardens by the Bay and enjoy its iconic light show.

DAY 11: BOARD THE NORWEGIAN JADE

After breakfast you will be transferred to Singapore's cruise terminal to board your cruise. The rest of the day is free to explore the ship's facilities and settle in. Throughout your cruise, when your ship comes into port, there will be a range of excursions available to help you explore each destination. These excursions are at your own expense and are bookable on your cruise reservation.

DAY 12: CRUISE - AT SEA

Spend the day exploring all of the exciting activities and facilities that are available on your cruise ship.

DAY 13: CRUISE - KOH SAMUI

One of Thailand's many paradise islands, your



time on Koh Samui can easily be spent lazing on a beautiful beach or discovering some of the island's glorious nature.

DAY 14: CRUISE - BANGKOK

Port at Laem Chabang, which gives you access to Thailand's vibrant capital. Here, you can visit the golden roofed palaces and temples among the gleaming skyscrapers and grab some delicious Thai food.

DAY 15: CRUISE - AT SEA

While away the day exploring the plentiful amenities of your cruise ship. Why not relax by the pool, enjoy a spa treatment, or try a lively dance lesson.

DAY 16: CRUISE - SAIGON

Dock at Phu My port. From here you can explore fascinating Saigon or head to the Mekong Delta, to immerse yourself in the lush greenery and farming culture.

DAY 17: CRUISE - AT SEA

Spend the days at sea trying out the different restaurants, watching live performances featuring a talented cast of performers and musicians or browsing shopping boutiques for souvenirs.

DAY 18: CRUISE - MUARA

A tiny sultanate on the island of Borneo, you can get a feel for Brunei Darussalam as you explore the port of Muara.

DAY 19: CRUISE - KOTA KINABALU

Why not spend today lounging on one of the city's glorious beaches or exploring more of the city?

DAY 20: CRUISE - PUERTO PRINCESA

At Puerto Princesa in the Philippines discover some World War II history, relax on the beach

or get even more adventurous by heading down into the Subterranean River, a UNESCO World Heritage Site.

DAY 21: CRUISE - CORON

Arrive at the second port of call in the Philippines, Coron Town on Busuanga Island. The gateway to much natural beauty and some spectacular beaches, many of which are nestled in the shadow of limestone cliffs.

DAY 22: CRUISE - AT SEA

Find your favourite spot to gaze out over the sparkling blue of the ocean, be it a café, on deck or from your cabin, as you cruise towards your final port of call.

DAY 23: CRUISE - HONG KONG

Dock at Hong Kong's cruise port where the day is at leisure before your final night onboard your cruise ship.

DAY 24: ARRIVE IN HONG KONG

Bid farewell to the Norwegian Jade. Met by a guide, you will be transferred to your hotel in Hong Kong where the rest of the day is at leisure.

DAY 25: EXPLORE HONG KONG

Spend the day exploring under the iconic skyline of Hong Kong. Ride the tram up Victoria Peak for breathtaking views and a fascinating walking tour. Enjoy a dim sum making demonstration, before eating dim sum for lunch, then head for the West Kowloon Cultural District. Later, follow The Avenue of Stars to admire Victoria Harbour at night.

DAY 26: FLY TO UK

Fly home to the UK, arriving home the following day.

BORNEO & BEYOND

CRUISE & TOUR

BORNEO, SINGAPORE, THAILAND, PHILIPPINES, HONG KONG

PHYSICAL RATING



IS THIS TOUR FOR YOU?

Explore the wonders of Southeast Asia on a far-reaching adventure that crosses this magical region. From the wilds of Borneo, where orangutans and pygmy elephants wait, you'll sail across to Hong Kong, stopping at glorious ports in Thailand, Vietnam and the Philippines on the way.

PRICES & DEPARTURES

Departure days of the week vary

2027 DATES

30 Jan - 24 Feb **£8,690**

Flight and supplement information

- Based on London Heathrow departures
- Regional UK departures available
- Flight upgrades available on request
- Single room outside from £3,490
- Land only from £7,790
- Tipping paid locally MYR 390 + SGD 15 + HKD 100
- Gratuities on cruise £202

Call us to register your interest for further departures of this tour.



Explore Coron on Busuanga island

▶ AUTHENTIC EXPERIENCES

- ▶ Part of the ancient Chinese ritual of 'yum cha' ('drink tea'), dim sum are the little bites that are eaten with Chinese tea, often served in bamboo baskets or plates with three or four steamed, fried or baked bite-size pieces designed to be shared. There is no experience more 'Hong Kong' than feasting on these delights!
- ▶ Head into the Kampong Glam neighbourhood where you'll be shown the art of 'pulling' tea to make 'teh tarik', a popular breakfast beverage. Strongly brewed black tea is poured back and forth between containers an impressive arm's length apart to cool it, before it is served with condensed milk.
- ▶ The Kinabatangan River offers some of Southeast Asia's best wildlife viewing. You'll have many opportunities to float down its tranquil waters, keeping an eye on the jungle-swathed riverbanks for a chance to spot hornbills, pygmy elephants, proboscis monkeys and much more.



Discover India with Wendy Wu Tours

From the cloud-piercing peaks of the Himalayas to the glittering blue of the Indian Ocean, India encompasses a whole wealth of landscapes and experiences that you won't find anywhere else on the planet. Here are some of our favourites...

WENDY'S TOP 4 INDIA EXPERIENCES

1 RANTHAMBORE NATIONAL PARK

Whether it's staking out watering holes or combing the tropical jungle of Ranthambore, looking for tigers is an exhilarating experience. The magnificent wilds of this national park also shelter a wealth of other wildlife from sloth bears to langurs – it is a safari experience to remember.



2 TAJ MAHAL

One of the world's most enchanting buildings, admiring the beauty of the Taj Mahal is magical. With unobstructed views from a rooftop with a glass of refreshingly cold champagne in hand, it's even better.



3 COOKING IN JAIPUR

Join a local family in their home in the 'Pink City' of Jaipur to cook a delicious dinner of local foods. Get to grips with herbs, spices and traditional ingredients and learn some new techniques in a warm and welcoming atmosphere, all sitting down to dine together on the results.



4 SNACK SAMPLING

The bustling market in Delhi's Connaught Place is full of stalls heaving under the weight of everything from clothes to electronics to souvenirs. To keep your energy up as you explore, tuck into a range of delicious local snacks, fresh from fragrant food stalls, such as samosas, pakodas and sweet chai tea.



INDIA BY LAND, SOUTHEAST ASIA BY SEA

CRUISE & TOUR

26 DAYS FROM

PER PERSON
£8,390

FLIGHT INCLUSIVE
FROM THE UK

ALL MEALS

12 NIGHT
CELEBRITY CRUISE

TOUR TICKLIST

- ✓ Sail from Singapore to Hong Kong
- ✓ See the sights of the Golden Triangle
- ✓ Search for tigers in Ranthambore
- ✓ Discover modern Singapore



Admire the Hawa Mahal

PRICE INCLUDES

- 24 breakfasts, 23 lunches & 24 dinners
- International flights and current taxes
- Domestic transportation
- 4 star accommodation, plus Celebrity Cruise
- Touring with guides and entrance fees
- Visa fees for UK passport holders



CELEBRITY SOLSTICE

Celebrity Solstice® is one of the most decorated ships at sea. So it's no wonder that it's full of "firsts." Like the first Lawn Club at sea and the first Hot Glass Show. The first cruise line to have 5 women, also known as "the Leading Ladies" redesign, and redecorate the staterooms.

Your Cruise Features

- ▶ All drinks including alcohol
- ▶ Outside or balcony cabins as standard
- ▶ All Meals onboard

ITINERARY

DAYS 1-2: FLY TO DELHI

Fly overnight to Delhi, India's dynamic capital. On arrival at the airport, you will be met by an English-speaking guide and transferred to the hotel. Depending on your time of arrival the rest of the day is yours to start soaking up the local culture.

DAY 3: EXPLORE DELHI

Explore India's capital, beginning in Old Delhi with a stroll through Chandni Chowk, savouring the ambience of this bustling bazaar. Continue to India's largest mosque, Jama Masjid, for a brief photo stop and India Gate. Then visit Humayun's Tomb, the 12th-century Qutab Minar and bustling Connaught Market, where you'll sample delicious local street foods.

DAY 4: TRAVEL TO AGRA

Journey to Agra by road. Tour the magnificent Agra Fort, sat picturesquely on the banks of the Yamuna River. Later, sip on a glass of champagne and enjoy your first look at the Taj Mahal from a rooftop restaurant with glorious views.

DAY 5: TAJ MAHAL SUNRISE

Rise early to share an unforgettable experience, sunrise at the Taj Mahal. At dawn, when the crowds are at their thinnest, watch this magical building tinge pink as it emerges from the early morning mists. Transfer to Ranthambore National Park, a former royal hunting ground that now provides a sanctuary for majestic Bengal tigers.

DAY 6: EXPLORE RANTHAMBORE

Explore Ranthambore National Park in search of tigers, taking early morning and afternoon safaris with a naturalist guide. There are

around 70 tigers living amongst the park's undulating landscapes, as well as leopards, nilgai, sloth bears, wild boar, hyena and over 300 species of bird.

DAY 7: TRAVEL TO JAIPUR

After breakfast, travel by road to the 'Pink City' of Jaipur, one of Rajasthan's most enthralling cities. This evening, visit the home of a local family where, together, you'll cook up a delicious feast of traditional foods.

DAY 8: EXPLORE JAIPUR

The day begins with a photo stop at the Hawa Mahal, then a visit to the extraordinary Amber Fort. Explore the lavish Maharaja's City Palace and the fascinating instruments of Jantar Mantar, then wander deep into the backstreets of the old town stopping to browse the wares of a bustling market.

DAY 9: RETURN TO DELHI

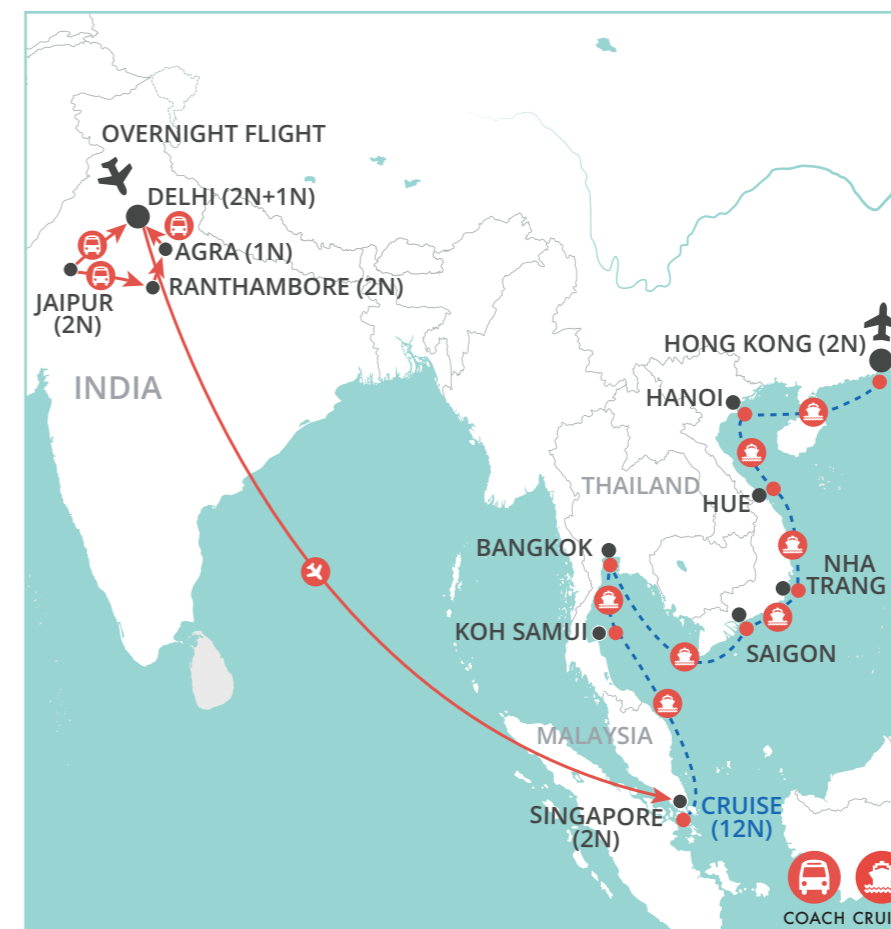
Travel back to Delhi by road. The rest of the day at leisure.

DAY 10: FLY TO SINGAPORE

Transfer to the airport and board your flight to Singapore, a magical, melting pot of a city-state!

DAY 11: EXPLORE SINGAPORE

Embark on a full day tour of Singapore. Begin in the historic neighbourhoods of Chinatown and Kampong Glam, then pass Parliament House on the way to Merlion Park where you'll get excellent views over Marina Bay. Arrive at the Fullerton Hotel via a hidden walkway for a delicious afternoon tea. Cruise the Singapore River as the sun sets then, post dinner, explore the magnificent Gardens by the Bay.



DAY 12: BOARD THE CELEBRITY SOLSTICE

After breakfast you will be met by an English-speaking guide and transferred to Singapore's cruise terminal to board your cruise. The rest of the day is free to explore the ship's facilities and settle in. Throughout your cruise, when your ship comes into port, there will be a range of excursions available to help you explore each destination. These excursions are at your own expense and are bookable on your cruise reservation.

DAY 13: CRUISE – AT SEA

Spend the day exploring the plentiful facilities and activities that are on offer on your cruise ship as you follow Malaysia's coastline up into Thailand.

DAY 14: CRUISE – EXPLORE KOH SAMUI

Discover this tropical paradise island with its waving palms, white sands, and azure waters.

DAY 15: CRUISE – EXPLORE BANGKOK

Arrive at Bangkok, Thailand's vibrant and heritage-filled capital city.

DAY 16: CRUISE – BANGKOK

Spend today at port in Bangkok.

DAY 17: CRUISE – AT SEA

Relax by the pool or go on a culinary exploration – there are many things to keep you entertained as you sail across the Gulf of Thailand.

DAY 18: CRUISE – EXPLORE SAIGON

Arrive in Saigon, Vietnam's vibrant powerhouse, where there is so much fascinating history and culture to discover.

DAY 19: CRUISE – EXPLORE NHA TRANG

Vietnam's high-energy beach resort, Nha Trang is gloriously set between green hills and a turquoise bay.

DAY 20: CRUISE – EXPLORE HUE

Port at Chan May to explore the imperial history of Hue or the relaxed vibes of Danang.

DAY 21: CRUISE – EXPLORE HANOI

Port in Halong Bay for Vietnam's capital city, Hanoi. Halong Bay itself is a spectacular UNESCO-listed seascape of limestone karst towers and cliffs, while Hanoi is a metropolis where you can discover layer upon layer of history on grand, bustling streets.

DAY 22: CRUISE – HANOI

Spend today at port in Halong Bay.

DAY 23: CRUISE – AT SEA

Your final day on board is the perfect time to revisit all your favourite eating and drinking spots, to see a show, get a pampering in the spa, or relax by the pool.

DAY 24: ARRIVE IN HONG KONG

Disembark Celebrity Solstice at Hong Kong's cruise port, where you will be met by a guide and transferred to your hotel.

DAY 25: EXPLORE HONG KONG

Spend the day exploring under the iconic skyline of Hong Kong. Ride the tram up Victoria Peak for breathtaking views and a fascinating walking tour. Return to Central and ride the Central Escalator of Tai Kwun, the city's new artistic hub. Continue to Hollywood Road and Man Mo Temple. Enjoy a dim sum making demonstration, before eating it for lunch, then head for the West Kowloon Cultural District. Later, visit the avenue of stars and have dinner at a local restaurant.

DAY 26: FLY HONG KONG TO UK

Fly to the UK, arriving home the same or the following day.

CRUISE & TOUR

INDIA, SINGAPORE, THAILAND,
VIETNAM, HONG KONG

PHYSICAL RATING



IS THIS TOUR FOR YOU?

Embark on an adventure that crosses from the west of Asia to the east, discovering India's Golden Triangle by land before hopping over to Singapore to cruise across Southeast Asia, finishing with a bang among the soaring skyscrapers of Hong Kong.

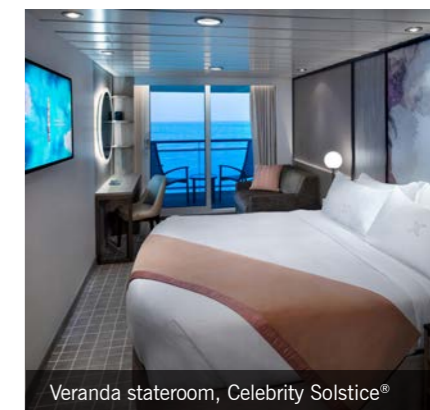
PRICES & DEPARTURES

Departure days of the week vary

2027 DATES	Balcony
27 Jan - 21 Feb	£8,390
20 Feb - 17 Mar	£8,390

Flight and supplement information

- Based on London Heathrow departures
- Regional UK departures available
- Flight upgrades available on request
- Single room outside from £3,990
- Land only from £7,690
- Tipping paid locally SGD15 + US\$80 + 100HKD
- Gratuities on cruise £165



Veranda stateroom, Celebrity Solstice®

▶ AUTHENTIC EXPERIENCES

- ▶ Rise early to stand before the fabled Taj Mahal as the sun rises. Watch this ethereal icon emerge from the dawn mists, the sun's rays dancing across its marbled surface, shifting through a spectrum of colours in the most magical way.
- ▶ Discover Singapore's secret GPO Tunnel, once used for running mail to ships waiting at the pier. From Merlion Park follow it under Fullerton Road and into the five-star, heritage Fullerton Hotel, where a delicious afternoon tea will be waiting.
- ▶ A Hong Kong institution, enjoy a dim sum demonstration, learning all about the different varieties, which are steamed, fried or baked, and how they are handcrafted and served. You'll dine on the delicious results for lunch.



Discover Africa with Wendy Wu Tours

An incredibly diverse and rich continent, Africa boasts vast, wildlife-filled landscapes, deeply rooted cultures and a huge diversity of sights. Exploring it, and the islands off its coast, is bound to be an adventurous experience!

WENDY'S TOP 5 AFRICA EXPERIENCES

1 GRAND BASSIN

Nestled in the lush and mountainous heart of Mauritius, Grand Bassin is a picturesque crater lake that is sacred to the island's Hindus, said to be filled with water from the holy River Ganges. The lake's shores are dotted with towering deities and colourful temples, waiting to be explored.



2 SEVEN COLOURED EARTHS

The surreal colours and contours of the Chamarel Seven Coloured Earths Geopark is a unique natural phenomenon where the soil forms stripes of vibrant reds, browns, violets, blues, and greens. This striking landscape, created by volcanic activity, is a popular attraction and a testament to the island's natural beauty.



3 WINE BLENDING

Coached by a wine ambassador, savour an interactive wine blending experience in the world-famous Cape Winelands wine region. Learn the art behind wine blending before being talked through the blending process and discovering which wine varieties work together before creating and tasting one of your very own.



4 GOLD RESTAURANT

Embark on a culinary adventure at Gold Restaurant, immersed in all things Africa. You'll dine on an epic 14-course dinner safari, tasting flavours from across the continent and hearing stories about their origins. All this is complimented by traditional puppets, music, and dancing.



5 BOULDERS BEACH

Visit Boulders Beach, famous for its large and adorable colony of African penguins, the only penguins found on the continent. The beach's picturesque setting, with granite boulders and clear waters, makes it a serene spot to relax and observe the penguins going about life in their natural habitat.



MAURITIUS, MADAGASCAR & THE WESTERN CAPE

CRUISE & TOUR

20 DAYS FROM

PER PERSON
£7,290

FLIGHT INCLUSIVE
FROM THE UK

ALL MEALS

11 NIGHT
NORWEGIAN CRUISE

TOUR TICKLIST

- ✓ Cruise from Port Louis to Cape Town
- ✓ Relax on beautiful Mauritius
- ✓ Ascend Table Mountain
- ✓ Explore the Cape Winelands
- ✓ See the penguins of Boulders Beach



Admire the wonders of Mauritius' Seven Coloured Earth Geopark

PRICE INCLUDES

- 18 breakfasts, 17 lunches & 18 dinners
- International flights and current taxes
- Domestic transportation
- 4 star accommodation, plus NCL cruise
- Touring with guides and entrance fees
- Visa fees for UK passport holders



NORWEGIAN SUN

Refurbished from bow to stern in 2021, the Norwegian Sun brings together classic design with elegant interiors and a refined atmosphere. Onboard there is never a dull moment, from the wide assortment of complimentary and speciality dining to the Casinos at Sea®, Mandara Spa and stages and lounges that bring endless entertainment. Cozy and modern staterooms are the perfect place to relax after a day filled with fun.

Your Cruise Features

- ▶ NCL's 'More at Sea Package', with enhanced beverages including premium spirits, upgraded speciality dining options and more!
- ▶ A range of shows, classes, lectures and trivia activities to get involved in.

ITINERARY

DAYS 1-2: FLY UK TO MAURITIUS

Fly overnight from the UK to Mauritius. On arrival you will be met and transferred to your hotel. The rest of the day is yours to relax and refresh or start exploring.

DAY 3: EXPLORE MAURITIUS

Today, enjoy a private tour of the southwestern corner of the island. Begin at Trou aux Cerfs, where you'll be able to stroll along the crater of this dormant volcano, enjoying spectacular views over the island and the Indian Ocean. Discover more about Mauritius' Hindu culture on the shores of Grand Bassin, visiting temples dedicated to Lord Shiva. Then, drive through the spectacular scenery of Black River Gorges National Park, before a final stop at the Chamarel Seven Coloured Earth Geopark.

DAY 4: MAURITIUS AT LEISURE

Spend today relaxing and making the most of your all-inclusive hotel, or continue exploring the local area.

DAY 5: BOARD NORWEGIAN SUN

After breakfast you will be met at your lodge by an English-speaking guide and transferred to Port Louis to board the Norwegian Sun. The rest of the day is free to explore the ship's facilities and settle in. Throughout your cruise, when your ship comes into port, there will be a range of excursions available to help you explore each destination. These excursions are at your own expense and are bookable on your cruise reservation.

DAY 6: CRUISE – EXPLORE RÉUNION

Arrive at Réunion, a French-governed island which, with green cloaked mountains, tumbling waterfalls, coral fringed beaches and thick forest, brings magical nature on a grand scale. Disembark at Pointe des Galets, from where you can explore Piton de la Fournaise, a climbable active volcano, hike through varied terrain or kick back on one of the jaw-droppingly gorgeous beaches, lapped by clear, warm Indian Ocean waters.

DAY 7: CRUISE – AT SEA

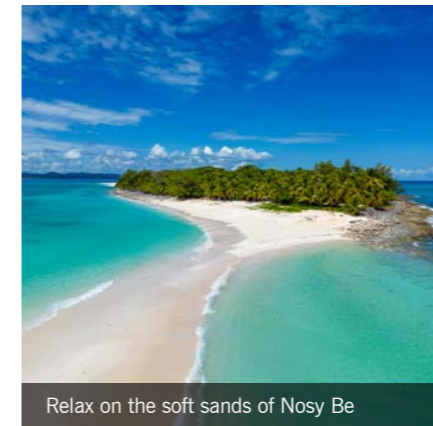
While away the day exploring the plentiful amenities of your cruise ship. Why not relax by the pool, enjoy a spa treatment, or try a lively dance lesson, as you cruise westward across the Indian Ocean.

DAY 8: CRUISE – EXPLORE MADAGASCAR

Port on the northern tip of the extraordinary island of Madagascar, at the buzzing port city of Antsiranana. With a whole day before you, you can explore bustling shops and restaurants and admire French Colonial architecture or escape the city to the glorious beaches or wildlife-filled forests that surround it.

DAY 9: CRUISE – EXPLORE MADAGASCAR

Arrive at Nosy Be, a paradise island just off the country's northwestern coast. There are volcanic lakes and coral reefs, soft sand beaches and spectacular nature to explore – you could spend the day with lemurs and chameleons at the Lokobe Reserve or learn about the local production of ylang-ylang at a plantation.



Relax on the soft sands of Nosy Be



Soak up the beauty of the Cape Winelands

DAYS 10-12: CRUISE – AT SEA

Spend these days at sea making the most of the Norwegian Sun's excellent range of facilities and activities. Try out the variety of restaurants, watch live performances featuring a talented cast of performers and musicians or browse the shopping boutiques for souvenirs.

DAYS 13-14: CRUISE – EXPLORE PORT ELIZABETH

Port at Port Elizabeth, also known as Gqeberha. Home to beautiful beaches, the wilderness around the city is home to the world's densest population of elephants. You have two days here to fill - choose to relax on one of those beaches, explore the wildlife and wilderness of a nearby game reserve, taste delicious local dishes or spend your time enjoying the facilities onboard.

DAY 15: CRUISE: EXPLORE MOSSEL BAY

Arrive in the harbour town of Mossel Bay. On South Africa's famous Garden Route, it is known for its beaches and glorious nature, with opportunities to hike up to a lighthouse, visit an archaeological site or feel the sand between your toes on a picturesque beach.

DAY 16: ARRIVE CAPE TOWN

Disembark the Norwegian Sun at Cape Town's cruise port, where you'll be met by a guide and transferred to your hotel. This evening you'll dine at the wonderful Gold Restaurant, an immersive and authentic African experience that features a 14-course taste safari and traditional African entertainment.

DAY 17: DISCOVER CAPE TOWN

Dive into Cape Town's natural beauty, rich history, and diverse mix of cultures. Visit

Greenmarket Square and the Castle of Good Hope, Company Gardens and the colourful Bo-Kaap neighbourhood. Then, ascend Cape Town's most iconic landmark, Table Mountain via the cableway for amazing views. This evening, enjoy dinner on the V&A Waterfront.

DAY 18: EXPLORE THE CAPE WINELANDS

Embark on a tour of the renowned Cape Winelands, a region that is an absolute feast for the senses. The day begins with a wine blending experience, where you'll be invited to create an original tasting blend from several different wine varieties, guided by a wine ambassador. Continue into the picturesque Franschoek valley, famous for both its wine and its Cape Dutch architecture, where you will have lunch followed by a wine and chocolate pairing. Return to Cape Town.

DAY 19: VISIT THE CAPE PENINSULA

Head out of the city to explore the dramatic scenery of the Cape Peninsula. Take a breathtaking drive along Chapman's Peak (weather permitting), revealing sweeping views over the Atlantic Ocean. Then find yourself among the rugged beauty of the Cape of Good Hope where you can stand on Cape Point and see the meeting of the Indian and Atlantic oceans. Finally, enjoy a visit to Boulders Beach, renowned for its resident African penguin colony, offering a close-up observation of these charming creatures.

DAY 20: FLY CAPE TOWN TO UK

Fly to the UK, arriving home the same or following day.

CRUISE & TOUR

MAURITIUS, SOUTH AFRICA

PHYSICAL RATING



IS THIS TOUR FOR YOU?

From the Indian Ocean islands of Mauritius, Reunion, and Madagascar around the southern tip of the African continent to extraordinary Cape Town and its surroundings, this spectacular voyage of discovery brings together majestic nature, wonderful wildlife and rich culture.

PRICES & DEPARTURES

Departing Saturday returning Thursday

2026 DATES	Outside	Balcony
25 Apr - 14 May	£7,290	£8,390

Flight and supplement information

- Based on London Heathrow departures
- Regional UK departures available
- Flight upgrades available on request
- Single room outside from £2,890
- Land only from £6,490
- Tipping paid locally ZAR750 (South Africa), EUR15 (Mauritius)
- Gratuities on cruise £171

Call for our 2027 pricing and departures



Watch penguins at Boulders Beach

▶ AUTHENTIC EXPERIENCES

- ▶ Nestled in the lush and mountainous heart of Mauritius, Grand Bassin is a picturesque crater lake that is sacred to the island's Hindus, said to be filled with water from the holy River Ganges. The lake's shores are dotted with towering deities and colourful temples, waiting to be explored.
- ▶ Embark on a culinary adventure at Gold Restaurant, immersed in all things Africa. You'll dine on an epic 14-course dinner safari, tasting flavours from across the continent and hearing stories about their origins. All this is complimented by traditional puppets, music, and dancing.
- ▶ Coached by a wine ambassador, savour an interactive wine blending experience in the world-famous Cape Winelands wine region. You'll be talked through the blending process and which wine varieties work together before creating and tasting your very own blend.

NEW

INDIAN OCEAN EXPLORER

CRUISE & TOUR

23 DAYS FROM

PER PERSON **£7,490**

FLIGHT INCLUSIVE FROM THE UK

ALL MEALS

16 NIGHT NORWEGIAN CRUISE

TOUR TICKLIST

- ✓ Cruise from Singapore to Mauritius
- ✓ Explore Gardens by the Bay
- ✓ Discover Singapore's neighbourhoods
- ✓ Cruise Singapore to Mauritius
- ✓ Port at Indian Ocean islands
- ✓ Savour paradisiacal Mauritius



Savour the beauty of the Seychelles

PRICE INCLUDES

- 21 breakfasts, 20 lunches & 21 dinners
- International flights and current taxes
- Domestic transportation
- 4 star accommodation, plus NCL cruise
- Touring with guides and entrance fees
- Visa fees for UK passport holders



NORWEGIAN SUN

Refurbished from bow to stern in 2021, the Norwegian Sun brings together classic design with elegant interiors and a refined atmosphere. Onboard there is never a dull moment, from the wide assortment of complimentary and speciality dining to the Casinos at Sea®, Mandara Spa and stages and lounges that bring endless entertainment. Cozy and modern staterooms are the perfect place to relax after a day filled with fun.

Your Cruise Features

- ▶ NCL's 'More at Sea Package', with enhanced beverages including premium spirits, upgraded speciality dining options, extra minutes on faster wifi, and more!
- ▶ A range of shows, classes, lectures and trivia activities to get involved in.
- ▶ Access to four hot tubs on deck

ITINERARY

DAYS 1-2: FLY TO SINGAPORE

Fly overnight to the vibrant city of Singapore. On arrival, transfer to your hotel where the rest of the day is yours to relax and refresh or start soaking up the local culture.

DAY 3: EXPLORE SINGAPORE

Embark a full day tour of Singapore. Begin in the historic neighbourhoods of Chinatown and Kampong Glam, where you can soak up local culture and learn about the art of 'teh tarik' (tea pulling). Pass Parliament House on the way to Merlion Park, where you'll get excellent views over Marina Bay. Arrive at the Fullerton Hotel via a hidden walkway for a delicious High Tea. Cruise the Singapore River as the sun sets then, post dinner, explore the magnificent Gardens by the Bay and enjoy its iconic light show.

DAY 4: BOARD NORWEGIAN SUN

After breakfast you will be met at your hotel and transferred to the port to board the Norwegian Sun. The rest of the day is free to explore the ship's facilities and settle in. Throughout your cruise, when your ship comes into port, there will be a range of excursions available to help you explore each destination. These excursions are at your own expense and are bookable on your cruise reservation.

DAY 5: CRUISE – AT SEA

While away the day getting to know the plentiful amenities of your cruise ship. Why not relax by the pool, enjoy a spa treatment, or try a lively dance lesson, as you cruise up the Malacca Strait.

DAY 6: CRUISE – EXPLORE PHUKET

Port at Phuket, Thailand, an island of white sand beaches and azure waters. Spend time relaxing or take the time to explore some of the region's many facets, from tranquil temples to spectacular national parks.

DAYS 7-9: CRUISE – AT SEA

Spend these days at sea making the most of the Norwegian Sun's excellent range of facilities and activities. Try the different restaurants, watch live performances featuring a talented cast of performers and musicians or browse the shopping boutiques for souvenirs.

DAYS 10-11: CRUISE – EXPLORE MALE

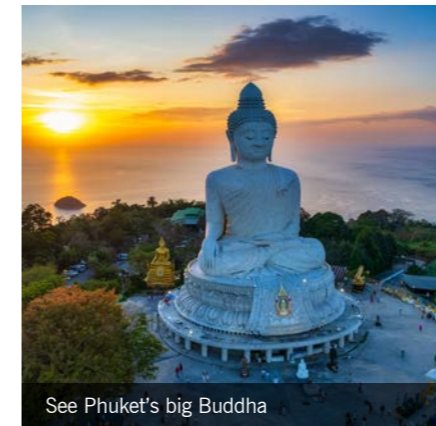
Welcome to the Maldives. Cruise between paradisaical atolls and islands to reach Malé, the capital. From here, you can explore this small city to view its architecture, browse the produce of the harbour's daily market or go scuba diving in the wildlife-filled waters.

DAYS 12-13: CRUISE – AT SEA

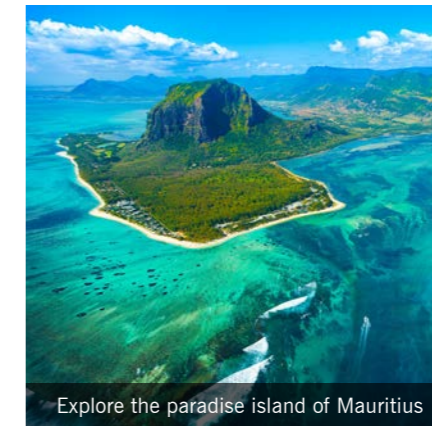
Find your favourite spot to gaze out over the sparkling blue of the Indian Ocean, be it a café, on deck or from your cabin, as your cruise continues westwards.

DAY 14: CRUISE – EXPLORE SEYCHELLES

Today you can visit the paradise island of La Digue by tender. Much of the island is undeveloped, so there are plenty of quiet bays, soft sand beaches and granite rock formations to explore, all backed by sparkling azure waters. For those feeling more active, the jungle swathed interior is perfect for hiking.



See Phuket's big Buddha



Explore the paradise island of Mauritius

DAY 15: CRUISE – EXPLORE SEYCHELLES

Stop at Port Victoria on Mahé Island, where you can explore Seychelles capital Victoria. Stroll the lovely National Botanical Gardens, bask on a sun-drenched beach or visit a colourful Hindu temple.

DAY 16: CRUISE – AT SEA

Continue your cruise across the Indian Ocean, making the most of all the happenings onboard the Norwegian Sun.

DAY 17: CRUISE – EXPLORE MADAGASCAR

Arrive at Nosy Be, a paradise island just off the Madagascar's northwestern coast. There are volcanic lakes and coral reefs, soft sand beaches and spectacular nature to explore – you could spend the day with lemurs and chameleons at the Lokobe Reserve or learn about the local production of ylang-ylang at a plantation.

DAYS 18-19: CRUISE – AT SEA

Use these final two days at sea onboard the Norwegian Sun to revisit your favourite hang outs, restaurants, and activities, or to tick off the things you haven't yet experienced.

DAY 20: ARRIVE IN MAURITIUS

Disembark the Norwegian Sun at Port Louis, the capital of Mauritius. You'll be met by a guide and transferred to your hotel. The rest of the day is free for you to relax or begin exploring your glorious tropical island surroundings.

DAY 21: EXPLORE MAURITIUS

Today, enjoy a private tour of the southwestern corner of the island. Begin at Trou aux Cerfs, where you'll be able to stroll along the crater of this dormant volcano, enjoying spectacular

views over the island and the Indian Ocean. Discover more about Mauritius' Hindu culture on the shores of Grand Bassin, visiting temples dedicated to Lord Shiva. Then, drive through the spectacular scenery of Black River Gorges National Park, pausing to admire Alexandra Falls before a final stop at the Chamarel Seven Coloured Earth Geopark.

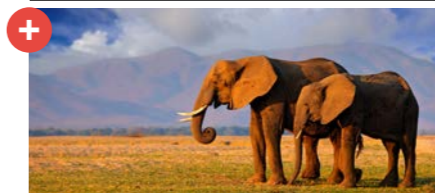
DAY 22: MAURITIUS AT LEISURE

Spend today relaxing at your hotel or exploring the local area.

DAY 23: FLY MAURITIUS TO UK

Fly to the UK, arriving home the same or following day.

EXTEND YOUR STAY...



BOTSWANA & ZIMBABWE EXTENSION
9 days from £4,190pp

VICTORIA FALLS EXTENSION
4 days from £1,490

Visit our website to learn more about all of our extensions and stopovers.

INDIAN OCEAN EXPLORER

CRUISE & TOUR

SINGAPORE, MALDIVES, SEYCHELLES, MADAGASCAR, MAURITIUS

PHYSICAL RATING



IS THIS TOUR FOR YOU?

Discover the wonders of vibrant, modern, metropolitan Singapore before setting sail westwards across the Indian Ocean pausing to explore a series of white-sand fringed and culture-filled paradise islands as you go.

PRICES & DEPARTURES

Departing Friday returning Saturday

2026 DATES	Outside	Balcony
10 Apr - 02 May	£7,490	£9,090

Flight and supplement information

- Based on London Heathrow departures
- Regional UK departures available
- Flight upgrades available on request
- Single room outside from £2,960
- Land & Cruise from £6,640
- Tipping paid locally EUR15 (Mauritius), SGD15 (Singapore)
- Gratuities on cruise £248

Call for our 2027 pricing and departures



Discover Singapore's vibrant Chinatown

▶ AUTHENTIC EXPERIENCES

- ▶ Head into the Kampong Glam neighbourhood where you'll be shown the art of 'pulling' tea to make 'teh tarik', a popular breakfast beverage. Strongly brewed black tea is poured back and forth between containers an impressive arm's length apart to cool it, before it is served with condensed milk.
- ▶ Discover a little of Singapore's secret history in the form of the GPO Tunnel, once used for running mail to waiting ships. From Merlion Park follow it under Fullerton Road and into the heritage Fullerton Hotel. Make your way to The Courtyard where a delicious afternoon tea will be waiting.
- ▶ Nestled in the lush and mountainous heart of Mauritius, Grand Bassin is a picturesque crater lake that is sacred to the island's Hindus, said to be filled with water from the holy River Ganges. The lake's shores are dotted with towering deities and colourful temples, waiting to be explored.

Discover Latin America & Antarctica with Wendy Wu Tours

South America is packed with deserts, rainforests, mountains and glaciers, rich in heritage and infused with a fun and fiery Latin beat, and is the gateway to the last great wilderness, Antarctica. This is a continent that is begging to be not just explored, but experienced!

WENDY'S TOP 6 LATIN AMERICA & ANTARCTICA EXPERIENCES



1 TANGO SHOW

The Argentine tango is a dance of passion that represents life and love. There is nowhere better to see it showcased than Buenos Aires, on whose streets it was born; get swept up in the atmosphere on a night full of this drama-filled dance.



2 ANTARCTICA

To discover the vast, frozen continent of Antarctica is the venture to the end of the world – to really explore it is an even more thrilling adventure! Daily inclusive excursions from your expedition ship are on foot or by small boat and will bring you up close to the abundance of wildlife or the pristine beauty of the landscapes, to help you delve deeper into the experience.



3 GAUCHO EXPERIENCE

Spend time on the vast, fertile grassland of Argentina known as the Pampas, on a traditional estancia (ranch). Here you'll get some insight into the life of folk heroes, the gaucho, the opportunity to ride a horse or walk through the glorious countryside, and feast on a typical asado lunch.



4 COOKING IN RIO

Embark on an epicurean exploration of Brazilian culture in an exciting cooking class in the iconic city of Rio de Janeiro. Discover traditional flavours and cooking techniques and explore the delicious range of locally grown ingredients, tasting everything as you go to get a better idea of Brazilian cuisine.



5 'ARGENTINE EXPERIENCE'

Take a journey through Argentina's culinary traditions on this immersive dining experience that showcases all of the country's best-known bites, from steak to malbec wine to dulce de leche. In between courses there are two hands-on classes to enjoy – how to make empanadas and all about yerba mate, Argentina's national drink. What better introduction to Argentine culture?



6 LEARN ABOUT CARNIVAL

Rio de Janeiro's Carnival is an extravaganza of colourful costumes, loud music and samba dancing! Learn all about Carnival at Cidade do Samba, the creative heart of the celebration, where you can try on one of the magnificent costumes and try out some dance moves.



NEW

ANTARCTICA & LATIN WONDERS

CRUISE & TOUR

19 DAYS FROM

PER PERSON **£17,990**

FLIGHT INCLUSIVE FROM THE UK

ALL MEALS

10 NIGHT HX HURTIGRUTEN EXPEDITION

TOUR TICKLIST

- ✓ Discover vibrant Rio
- ✓ Feel the power of Iguazu
- ✓ Explore Buenos Aires' barrios
- ✓ Embark on a 5-day Antarctica expedition



Explore Antarctica's dramatic landscape

PRICE INCLUDES

- 18 breakfasts, 17 lunches & 18 dinners
- International flights and current taxes
- Domestic transportation
- 5 star accommodation, plus HX Hurtigruten Expedition
- Touring with guides and entrance fees



MS FRIDTJOF NANSEN

The MS Fridtjof Nansen is newest addition to the HX fleet, and one of the world's most environmentally friendly ships. As relaxed and comfortable as a home away from home, the ship serves as your floating base camp, with three restaurants, a fitness and wellbeing suite, observation deck and stylish cabins to return to after a day exploring. This adventure is all-inclusive with talks, activities, excursion, food and drink all included, as well as full access to the Science Centre, the heart of the ship.

Your Cruise Features

- ▶ Daily excursions and activities
- ▶ All meals and drinks (excluding premium drinks)
- ▶ Sauna and hot tubs to relax in
- ▶ Expedition gear and water bottle to keep
- ▶ Gratuities included

ITINERARY

DAYS 1: FLY TO RIO DE JANEIRO

Fly to the dynamic city of Rio de Janeiro. On arrival, transfer to your hotel where the rest of the day is yours to relax and refresh or start soaking up the local culture.

DAY 2: DISCOVER RIO

Spend the day visiting Rio's best bits. Soar up to the heights of Sugar Loaf Mountain by cable car. At the top you'll have magnificent views over the city and its gorgeous setting of mountains, beaches and bays. This afternoon, take part in a cooking class, learning all about traditional Brazilian flavours and using local ingredients to whip up something delicious.

DAY 3: CHRIST THE REDEEMER

Carry on exploring Rio, starting today with the city's most iconic sight, Christ the Redeemer. Riding up to the summit of the Corcovado by train, from the top you'll get more spectacular views. This afternoon is dedicated to Rio's most celebrated tradition, Carnival! Visit the Cidade do Samba, the creative heart of Carnival's production, to learn all about its history and the preparation behind it and try on one of the colourful costumes.

DAY 4: TRAVEL TO IGUAZU

Bid farewell to Rio and transfer to the airport for your flight to Foz de Iguazu. On arrival, head straight into the beautiful nature of Iguazu National Park, which straddles the border between Brazil and Argentina, for your first look at Iguazu Falls. Board a glass elevator down to a viewing platform from where you can get an excellent view of the Garganta do Diabo (Devil's Throat), the waterfall's most dramatic cataract. Cross the border into Argentina.

DAY 5: MORE IGUAZU

Explore the Argentinian side of the falls today. Wander trails that will give you a closer look at some of the smaller falls as well as getting a fantastic overview of the sheer size, power and magnificence of the falls as a whole. This evening, enjoy 'The Argentine Experience', where you'll learn to make empanadas, dine on delicious, quintessentially Argentinian food and drink Malbec wine and mate tea.

DAY 6: FLY TO BUENOS AIRES

Fly to Argentina's enchanting capital, Buenos Aires. Begin exploring as soon as you arrive, starting at the Plaza de Mayo, where you can admire some of the country's most important buildings. You'll also discover the barrios (neighbourhoods) of Palermo, Retiro, Recoleta (with a visit to its famous cemetery), San Telmo and La Boca, each with a personality and atmosphere of its own.

DAY 7: RURAL ARGENTINA

Spend the day just outside the city on the vast, fertile grasslands known as the pampas, on a traditional estancia (ranch). Here you'll get some insight into the life of a gaucho, and after a typical Argentinian asado lunch, you can sit back and enjoy a show of folk music played on the guitar.

DAY 8: BOARD THE MS FRIDTJOF NANSEN

Fly to Ushuaia. Called the "End of the World", Argentina's and the world's southernmost city. Transfer to the port and board your hybrid-powered expedition ship. Spend the rest of the day settling into your cabin, attending the expedition briefing and exploring the ship's



facilities. While most activities onboard and onshore are included, there are a selection of optional activities which may be available at an additional cost. These are subject to conditions and a lottery-based allocation system.

DAYS 9-10: CRUISE – DRAKE PASSAGE

Set sail towards Antarctica, embarking on a two-day crossing of the legendary Drake Passage. Where the Pacific and Atlantic oceans meet, at the very tip of the South American continent, the Drake Passage is an exhilarating sea crossing with chances to spot seabirds like albatrosses and petrels and whales in the waves. During this time at sea, your Expedition Team will give lectures and briefings to prepare you for the adventure that lies ahead. You can also visit the onboard Science Centre and relax in the spa and wellness area or Explorer Lounge & Bar.

DAYS 11-15: CRUISE – ANTARCTICA

Your first glimpse of the 'White Continent' will be a moment you'll never forget, a vast, untouched kingdom of snow, ice, rock and water. Be prepared to be continuously awed by the sheer scale and silence of this ultimate wilderness as you explore. During your five days of Antarctic exploration, the itinerary will remain flexible to take advantage of the weather and conditions. You can expect landings and ice cruises, led by the Expedition Team, that allow you to get up close to extraordinary wildlife that include different species of penguins, whales and seals, and birds like the huge wandering albatross. Throughout your time here there will be lectures on wildlife, history, climate and conservation, to enrich your experience.

DAYS 16-17: RETURN CRUISE

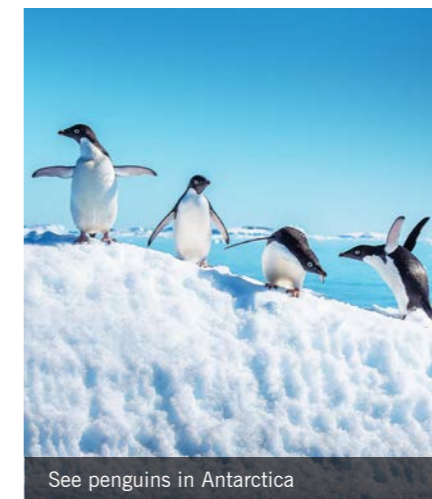
Head north, back across the Drake Passage. Spend these two days reflecting on your adventures in Antarctica, sharing stories with fellow travellers, unwinding with spa treatments and relaxing into the peaceful rhythms of the voyage.

DAY 18: ARRIVE IN USHUAIA

Bid farewell to the MS Fridtjof Nansen as you disembark in Ushuaia and fly back to Buenos Aires. This evening you'll have a memorable farewell dinner at a passion-filled Tango Show. With music, dancing, singing and delicious food, it is a thrilling way to end your journey.

DAY 19: FLY TO UK

Fly home to the UK from Buenos Aires, arriving the same or following day.



See penguins in Antarctica

ANTARCTICA & LATIN WONDERS

CRUISE & TOUR

BRAZIL, ARGENTINA, ANTARCTICA

PHYSICAL RATING



IS THIS TOUR FOR YOU?

Cross the last frontier of travel on an expedition into the wilds of Antarctica. Experience two of South America's great cities and the mighty Iguazu Falls before heading into the remote wilderness of the 'White Continent', on this one truly once-in-a-lifetime adventure.

PRICES & DEPARTURES

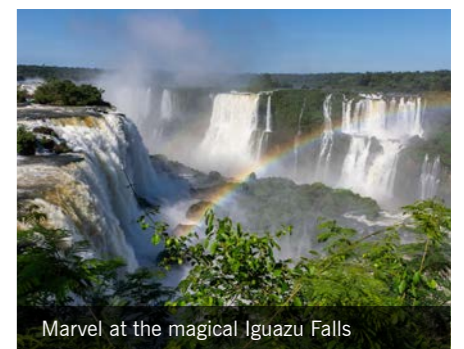
Departing Sunday returning Monday

2027 DATES	Outside	Balcony	Suite
12 Jan - 30 Jan	£17,990	£20,390	£22,790

Flight and supplement information

- Based on London Heathrow departures
- Regional UK departures available
- Flight upgrades available on request
- Single room outside from £5,890
- Land only from £17,240
- Tipping paid locally 80USD (Argentina and Brazil)
- Gratuities on cruise included

Call for our alternative 2027 departure which also features the Falkland Islands.



Marvel at the magical Iguazu Falls

▶ AUTHENTIC EXPERIENCES

- ▶ Embark on an epicurean exploration of Brazilian culture in an exciting cooking class. Discover traditional flavours and cooking techniques and explore the delicious range of locally grown ingredients, tasting everything as you go to get a better idea of Brazilian cuisine.
- ▶ Take a journey through Argentina's culinary traditions on this immersive dining experience. Showcasing all of the country's best-known bites, from steak to malbec wine to dulce de leche, there are two hands-on classes – how to make empanadas and all about yerba mate, Argentina's national drink. What better introduction to Argentine culture?
- ▶ The Argentine tango is a dance of passion that represents life and love. There is nowhere better to see it showcased than Buenos Aires, on whose streets it was born; get swept up in the atmosphere on a night full of this drama-filled dance.

Your questions answered

A selection of our most frequently asked questions.



Q. How soon after making our booking will we receive confirmation?

A. Once we have received your deposit payment, we will send you confirmation documents. Your cruise reference will usually be available to you a month or two after your deposit is paid.

Q. Do you send us information about the destinations we will visit?

A. It is essential that you read the relevant Tour Dossier before booking, which you can find on wendywutours.co.uk or we can arrange for one to be sent to you. If there are any particular challenges such as the length of time spent on your feet, journey times or accommodation standards, they will be explained in these concise trip notes. Three weeks before you travel, you will receive a detailed day-to-day itinerary as part of your final documents.

Q. Will I know which hotels I will be staying in before I go?

A. Hotel details will be sent with your final documents around three weeks prior to departure. Note that these may be subject to change. Hotels generally range from 3-4 stars. In more remote areas, accommodation may be of a lower standard and may not have all western amenities. Rest assured that all hotels used by Wendy Wu Tours are regularly inspected by our partners to ensure that standards meet your needs. If you require an early check-in or late check-out for your arrival and departure days, please contact us.

Q. How do I get my visa?

A. When you make your booking, we will advise you on the latest visa requirements for your

destination. Our operations team will get in touch with you nearer the time of your departure with full information on how to obtain your visa.

Q. Do I need travel insurance?

A. Travel Insurance and proof of coverage is required for Cruise & Tour. We recommend that you take out a policy as soon as you pay your deposit.

Q. What vaccinations do I need?

A. Vaccination requirements often change, therefore for up-to-date information please seek your doctor's advice.

Q. Do you run guaranteed departures?

A. Group tours are generally guaranteed to run subject to a minimum of 10 passengers. A National Escort will usually accompany each group of 10 or more on the land tour components. We will endeavour to run groups of a smaller size if viable to do so. In the unfortunate event the cruise associated with your tour is cancelled, an alternative option will be provided.

Q. Will I have the same tour guide throughout?

A. You will have a local guide that will accompany you throughout your land touring components. In each country/region you will be met with by a different local guide who will escort you while there. Please know there will be no Wendy Wu Tours guide accompanying you on your cruise.

Q. As a single traveller, will I have to pay a single supplement?

A. Yes, you will be required to pay a single supplement for your own room on tour and cruise. We do not have a share option on our Cruise & Tours.

Q. What is the maximum luggage allowance on your tours?

A. All travellers are limited to two items of luggage each: a suitcase with a maximum weight of 20kg and one piece of hand luggage with a maximum weight of five kilograms. It is essential that your luggage is lockable.

Q. What size are your tour groups?

A. The group size on our land touring portion is on average around 21 passengers, with a maximum group size 28. You may meet other tour groups travelling concurrently. On our group tours we operate a seat-and-a-half policy, allowing you to travel in greater comfort.

Q. What currency should I take?

A. We recommend you take US dollars as well as the local currency and a credit/ debit card. We do not recommend travellers cheques. Please ensure you have sufficient funds to pay for personal expenses such as drinks, snacks, souvenirs, additional tipping (if required) and optional extras.

Q. How fit do I need to be?

A. Our group tours are graded on each page with a Physical Rating to reflect the level of fitness required. More information on these ratings can be found at the front of our brochure, on our website and in the tour dossiers. Please read through the tour dossier for details on day to day touring to ensure you are able to complete these activities. Most of our Cruise & Tours are a physical rating 1.

Q. How can I book cruise shore excursions?

A. Cruise shore excursions are not included. Shore excursions are bookable and payable directly with the cruise line. Once you are confirmed on our group tour, we can supply your cruise reservation number. You can then login to your guest account on the cruise ship webpage to book and pay for cruise excursions (if released). Although the majority of the destinations have multiple shore excursion options, there are a few ports that do not. Shore excursions are led by knowledgeable and experienced guides who work with reputable local independent operators. We strongly suggest booking your shore excursions before departure to avoid disappointment since all the experiences are on a first come first serve basis. There is however a shore excursions kiosk onboard each voyage for you to book last-minute excursions.

Q. Can special requests be arranged?

A. If you have any special requests such as dietary requirements, cruise cabin requests or if you wish to celebrate an event, please notify us at the time of booking and we will do everything possible to ensure your requests are met. Please note that special requests cannot be guaranteed.

Q. Is there a dress code on your tours?

A. Our dress code for land touring is very relaxed; however, please note that clothing covering the arms and legs is more appropriate when visiting religious buildings. On the cruise the dress code is also relaxed however please be aware smart casual attire may be required for entry into some dining and entertainment areas, with 'formal nights' schedules on some cruises. Please refer to your tour dossier for specific information on your cruise line.

Q. What sort of vehicles do you use?

Air: Internal flights are based on economy class, with reputable local airlines.

Road: Coaches with air conditioning are used on our group tours for city sightseeing, short excursions to the countryside and longer transfers where necessary.

Rail: Second class reserved seats are booked for our groups on bullet trains; there will be toilet facilities on board. Due to the limited space on bullet trains, a separate luggage transfer service may be arranged for all suitcases (1 case per person), and you may require a separate overnight bag to carry on the train as your suitcase will not arrive until the following day after a bullet train journey. Your guide will indicate when you will need to prepare for this throughout your tour. Please refer to your tour dossier for specific information on rail travel.

Ocean & River: Guests will stay in Balcony or Outside cabins and travel with reputable cruise lines. There may also be touring that involves smaller boats during your trip. To undertake these excursions, you will need to be capable of boarding and disembarking from these boats, sometimes without assistance and/or handrails.

Q. Are meals and drinks included?

A. All meals (excluding beverages) are included in the land portion of group tours, except where stated. All meals on the cruise are included in the main dining areas when choosing to dine onboard. Please note that in remote areas, meals may be simple and choices limited. On your Cruise & Tour your first meal will be dinner on the day of arrival and will end with breakfast on the normal day of departure. Any additional meals will be at your own expense and no refund will be made for any meals missed.

All beverages will be at your own expense and are readily available during your land touring. You can find details on your cruise beverage package on the tour dossiers (if applicable).

Q. Do you allow children on your tours?

A. We allow children 12 years and over on our Cruise & Tours.



Q. Will I be travelling with passengers from other countries?

A. Our groups are generally made up of travellers from the UK, Ireland, Australia and New Zealand. Occasionally we are joined by English speaking passengers from other countries.

Q. How do I check in for my cruise?

A. Wendy Wu Tours will transfer you to the cruise port in time for check-in. When you arrive you can expect an easy check in that will likely include presenting a valid passport, signing the cruise ticket contract, swiping a credit card for incidentals and taking a picture for your keycard. Luggage tags are available electronically for you to print out via your Guest Account. Luggage tags will also be available at the pier for guests who would prefer to use this service at the terminal prior to boarding. More details information for cruise check-in will be included in your final documentation.

Q. Is tipping included?

A. Cruise gratuities are typically not included in your trip cost. During our land tour, tipping is also often expected and not included in your tour cost. More details on both cruise gratuities and land tipping expectations and amounts can be found on the tour page and dossiers.



Health & Safety

Your health, safety and well-being on holiday are of paramount importance to us. Wendy Wu Tours is a fully insured and bonded tour operator with comprehensive public liability cover. Working closely with an independent health and safety organisation, our local partners carry out health and safety checks on accommodation, transport and excursions; and works with our destination partners and suppliers towards improving health and safety standards throughout the regions in which we operate. All travellers should be aware that safety standards vary across the different regions we visit and may not match the standards we enjoy in the UK. In the unlikely event of a problem or emergency on tour, Wendy Wu Tours has a Crisis Management process in place to support all of our customers. We also have a dedicated 24 hour emergency support number.

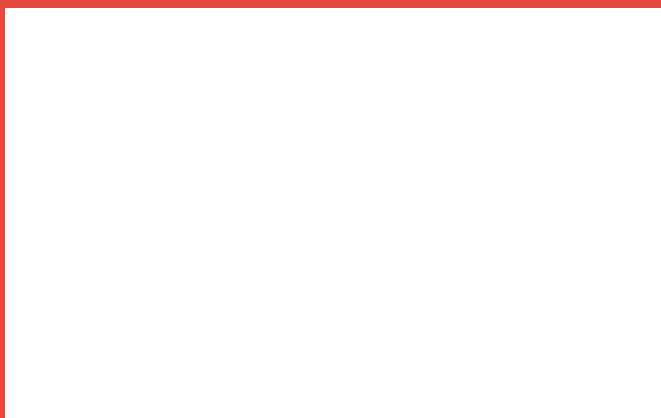
TOP REASONS TO CHOOSE WENDY WU TOURS

- Fully inclusive prices with no hidden extras
- Outstanding guides
- Unrivalled knowledge and expertise
- Specialist advice from our experienced consultants
- Extensive range of group, private and tailor-made holidays
- Depart from many regional UK airports
- Visa service included
- Holder of Feefo Gold Trusted Service Award
- Safe and secure with ABTA, ATOL & IATA
- Winner of industry's 'Best Long Haul Specialist Tour Operator' 15 years in a row

WE OFFER TOURS AND TAILORMADE TRAVEL TO DESTINATIONS ACROSS THE WORLD

- Antarctica • Argentina • Armenia • Azerbaijan • Bhutan • Bolivia • Borneo • Botswana • Brazil • Brunei • Cambodia • Chile
- China • Colombia • Costa Rica • Ecuador & Galapagos • Egypt • Georgia • Hong Kong • India • Japan • Jordan • Kazakhstan
- Kyrgyzstan • Laos • Madagascar • Malaysia • Maldives • Mauritius • Mongolia • Morocco • Nepal • Peru • Philippines
- Portugal • Reunion • Saudi Arabia • Seychelles • Singapore • South Africa • South Korea • Sri Lanka • Taiwan • Tajikistan
- Tibet • Thailand • Turkey • Turkmenistan • Uzbekistan • Vietnam • Zimbabwe

To book please call or visit your preferred travel agent.



Wendy Wu Tours Limited
Newhams Yard
151-153 Tower Bridge Road
London, SE1 3JE

info@wendywutours.co.uk
wendywutours.co.uk

Opening Hours:
Mon-Fri 9:00am – 5:30pm
Sat 10:00am – 4pm
Sun and Bank Holidays – Closed

Opening times may vary at different times of the year. Please visit wendywutours.co.uk for updates.

